



# Violet IV

CLASSIC SERIES

## SUNSET RIDGE

200 CIENNA COURT, ALVARADO, TX 76009

HOMES FROM

**\$425,990**

**2,838**

SQUARE FEET

**4**

BEDROOMS

**3.5**

BATHROOMS

**2**

CAR GARAGE



**ELEVATION A**



**ELEVATION AS**

ELEVATION AS



**ELEVATION B**

ELEVATION B



**ELEVATION C**

ELEVATION C



**ELEVATION D**

ELEVATION D



# Violet IV

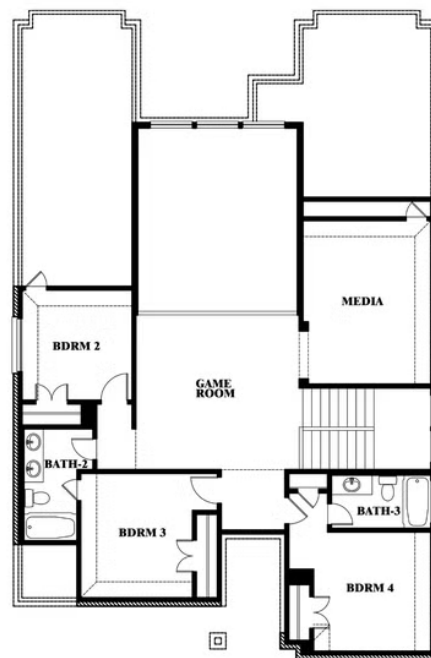
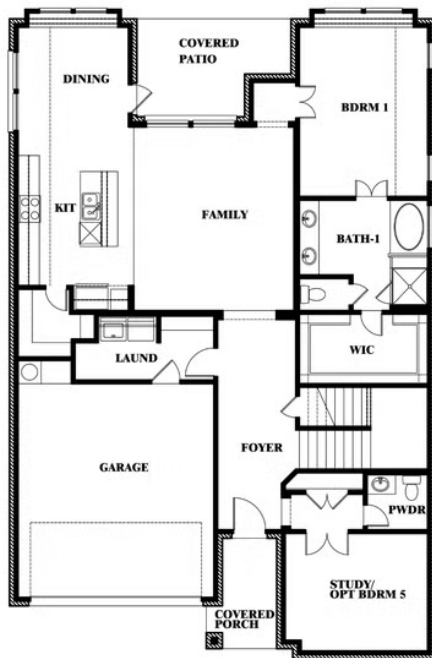
## VIOLET IV FLOOR PLAN

## SUNSET RIDGE

200 CIENNA COURT, ALVARADO, TX 76009



## Violet IV



This brochure is for general informational purposes and is to be used as a guide only. Changes may be made during the development process and floorplans, dimensions, fixtures, fittings, finishes and specifications are subject to change without notice. Window placement, balcony configuration, wardrobe sizes and living areas may vary slightly within each plan type. EQUAL HOUSING OPPORTUNITY



# Violet IV

**VIOLET IV FLOOR PLAN WITH OPTIONAL BEDROOM AT STUDY**

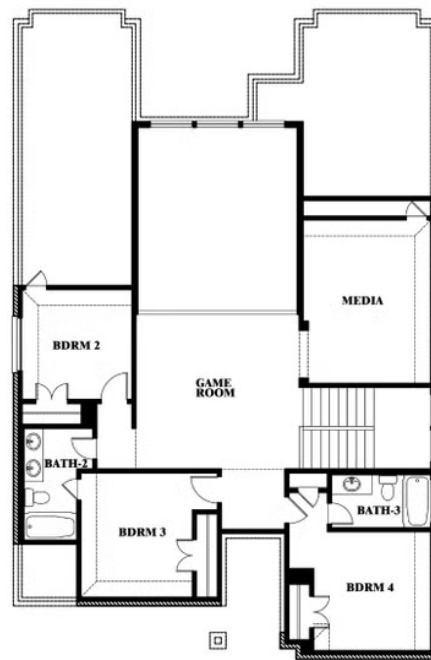
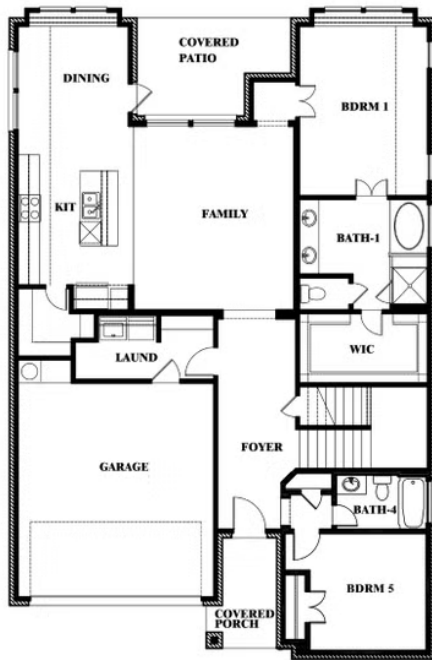
## SUNSET RIDGE

200 CIENNA COURT, ALVARADO, TX 76009



## Violet IV

Opt. Bed 5 & Bath 4 at Study



This brochure is for general informational purposes and is to be used as a guide only. Changes may be made during the development process and floorplans, dimensions, fixtures, fittings, finishes and specifications are subject to change without notice. Window placement, balcony configuration, wardrobe sizes and living areas may vary slightly within each plan type. EQUAL HOUSING OPPORTUNITY