



# Dogwood III

CLASSIC SERIES

## HULEN TRAILS

10628 MOSS COVE DRIVE, FORT WORTH, TX 76036

HOMES FROM

**\$424,990 – \$439,990**

**2,333**

SQUARE FEET

**4**

BEDROOMS

**3.0**

BATHROOMS

**2**

CAR GARAGE

**ELEVATION C**



**ELEVATION A**



**ELEVATION ES**



**ELEVATION FS**



**ELEVATION G**



**ELEVATION GS**





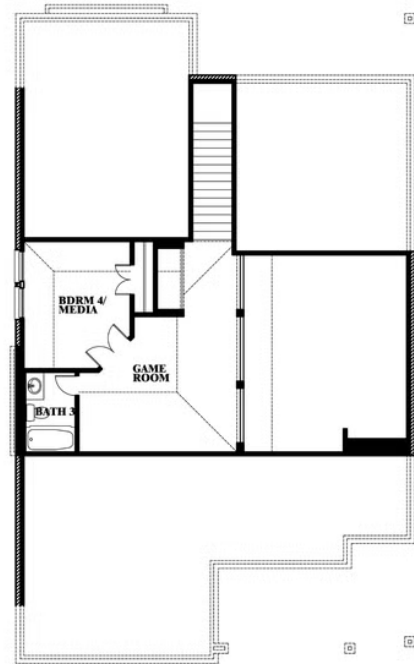
# Dogwood III

## HULEN TRAILS

10628 MOSS COVE DRIVE, FORT WORTH, TX 76036



## Dogwood III



This brochure is for general informational purposes and is to be used as a guide only. Changes may be made during the development process and floorplans, dimensions, fixtures, fittings, finishes and specifications are subject to change without notice. Window placement, balcony configuration, wardrobe sizes and living areas may vary slightly within each plan type. EQUAL HOUSING OPPORTUNITY