



Bellflower IV

CLASSIC SERIES

GEORGETOWN AT KINGS FORT

4102 BERRY LANE, KAUFMAN, TX 75142

HOMES FROM

\$551,990

4,226

SQUARE FEET

5

BEDROOMS

4.5

BATHROOMS

2

CAR GARAGE

ELEVATION AS



ELEVATION A



ELEVATION A

ELEVATION B



ELEVATION B

ELEVATION C



ELEVATION C

ELEVATION D



ELEVATION D



Bellflower IV

GEORGETOWN AT KINGS FORT

4102 BERRY LANE, KAUFMAN, TX 75142



Bellflower IV



This brochure is for general informational purposes and is to be used as a guide only. Changes may be made during the development process and floorplans, dimensions, fixtures, fittings, finishes and specifications are subject to change without notice. Window placement, balcony configuration, wardrobe sizes and living areas may vary slightly within each plan type. EQUAL HOUSING OPPORTUNITY



Bellflower IV

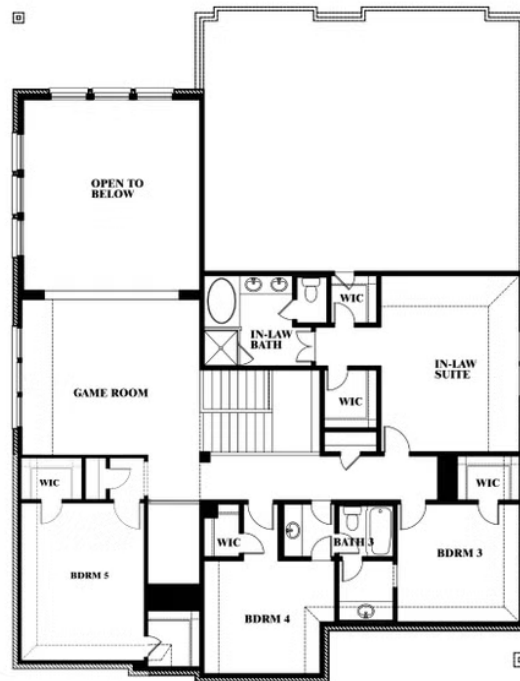
GEORGETOWN AT KINGS FORT

4102 BERRY LANE, KAUFMAN, TX 75142



Bellflower IV

Opt. Bed 5 at Media



This brochure is for general informational purposes and is to be used as a guide only. Changes may be made during the development process and floorplans, dimensions, fixtures, fittings, finishes and specifications are subject to change without notice. Window placement, balcony configuration, wardrobe sizes and living areas may vary slightly within each plan type. EQUAL HOUSING OPPORTUNITY



Bellflower IV

GEORGETOWN AT KINGS FORT

4102 BERRY LANE, KAUFMAN, TX 75142



Bellflower IV Opt. Bed 5/Bath 4 at Media



This brochure is for general informational purposes and is to be used as a guide only. Changes may be made during the development process and floorplans, dimensions, fixtures, fittings, finishes and specifications are subject to change without notice. Window placement, balcony configuration, wardrobe sizes and living areas may vary slightly within each plan type. EQUAL HOUSING OPPORTUNITY