



Violet IV

CLASSIC SERIES

THE LAKES AT PARKS OF ALEDO

1154 BAILEY RANCH ROAD, ALEDO, TX 76008

HOMES FROM

\$571,990

2,838

SQUARE FEET

4

BEDROOMS

3.5

BATHROOMS

2

CAR GARAGE



ELEVATION A



ELEVATION AS

ELEVATION AS



ELEVATION B

ELEVATION B



ELEVATION C

ELEVATION C



ELEVATION D

ELEVATION D





Violet IV

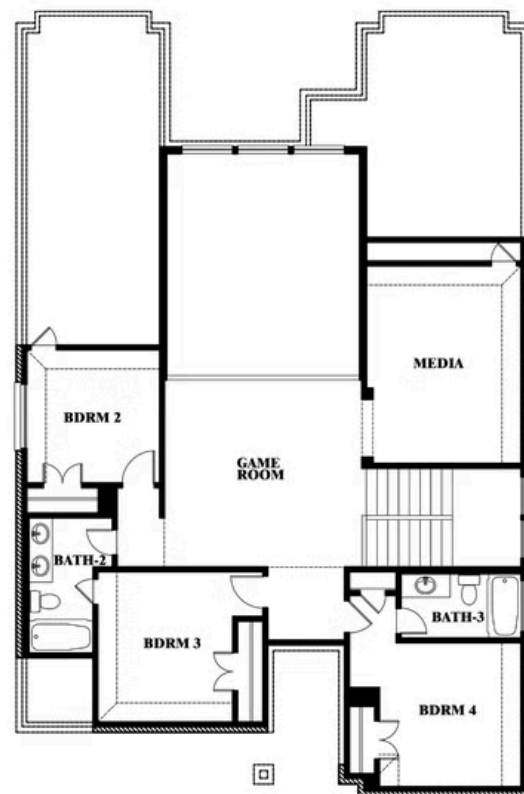
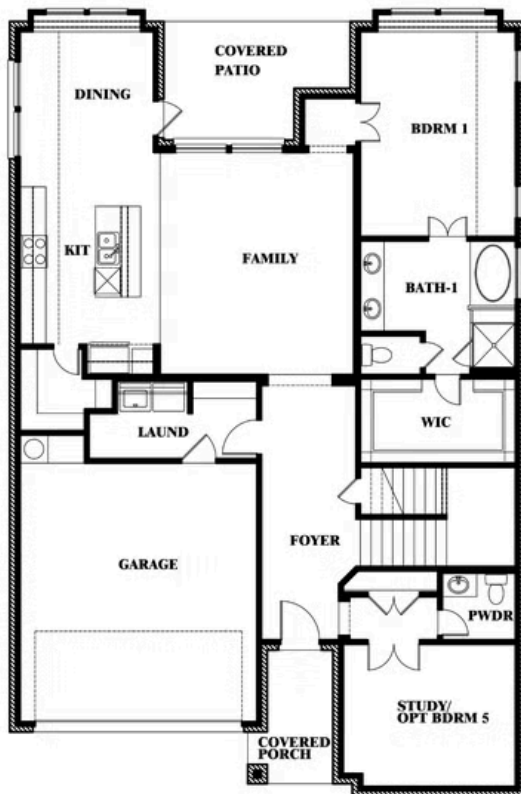
VIOLET IV FLOOR PLAN

THE LAKES AT PARKS OF ALEDO

1154 BAILEY RANCH ROAD, ALEDO, TX 76008



Violet IV



This brochure is for general informational purposes and is to be used as a guide only. Changes may be made during the development process and floorplans, dimensions, fixtures, fittings, finishes and specifications are subject to change without notice. Window placement, balcony configuration, wardrobe sizes and living areas may vary slightly within each plan type. EQUAL HOUSING OPPORTUNITY





Violet IV

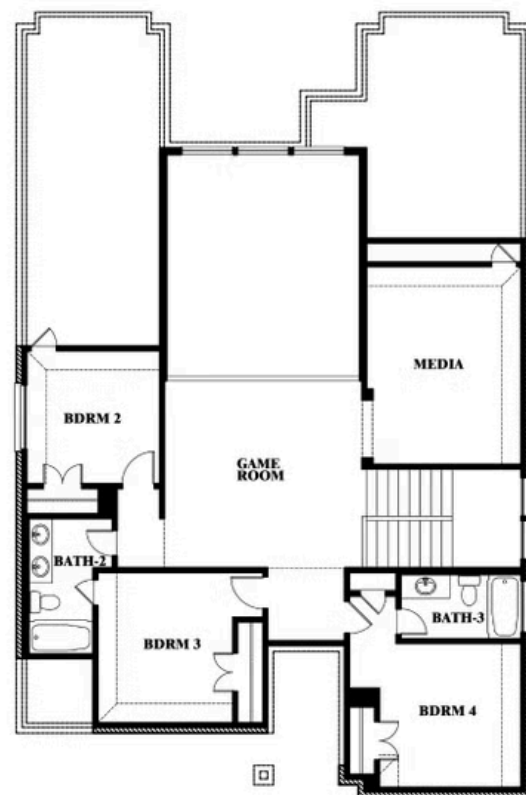
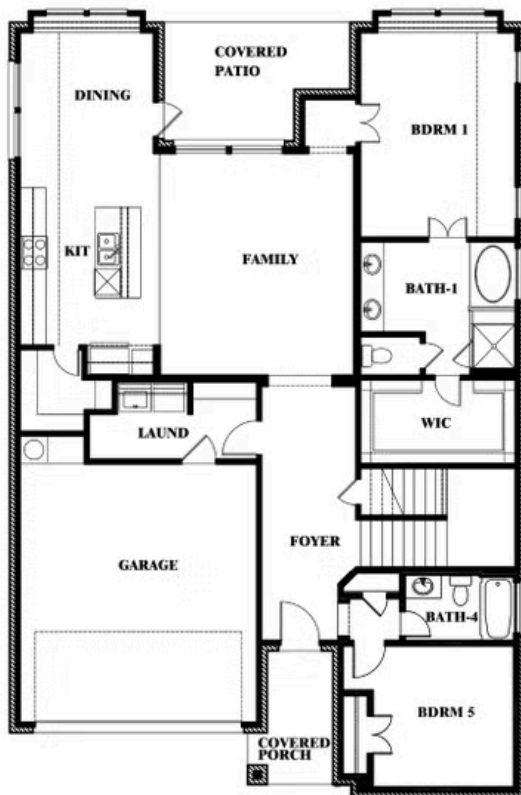
VIOLET IV FLOOR PLAN WITH OPTIONAL BEDROOM AT STUDY

THE LAKES AT PARKS OF ALEDO

1154 BAILEY RANCH ROAD, ALEDO, TX 76008



Violet IV Opt. Bed 5 & Bath 4 at Study



This brochure is for general informational purposes and is to be used as a guide only. Changes may be made during the development process and floorplans, dimensions, fixtures, fittings, finishes and specifications are subject to change without notice. Window placement, balcony configuration, wardrobe sizes and living areas may vary slightly within each plan type. EQUAL HOUSING OPPORTUNITY

