



# 1009 Raptor Road

ALVARADO, TX 76009

**EAGLE GLEN**

REDBUD II FLOOR PLAN

<b>2,686</b> SQUARE FEET	<b>5</b> BEDROOMS	<b>3.0</b> BATHROOMS	<b>2</b> CAR GARAGE
-----------------------------	----------------------	-------------------------	------------------------

MODEL HOME • 1001 RAPTOR ROAD | VIOLET IV

MODEL HOME • 1009 RAPTOR ROAD | REDBUD II

Model Home



The Elements Series Redbud II floor plan is a two-story home with five bedrooms and three bathrooms. Features of this plan include a large family room, an open dining and kitchen with custom cabinets and an island, a primary suite with a walk-in closet, and an upstairs game room. Contact us or visit our model home for more information about building this plan.





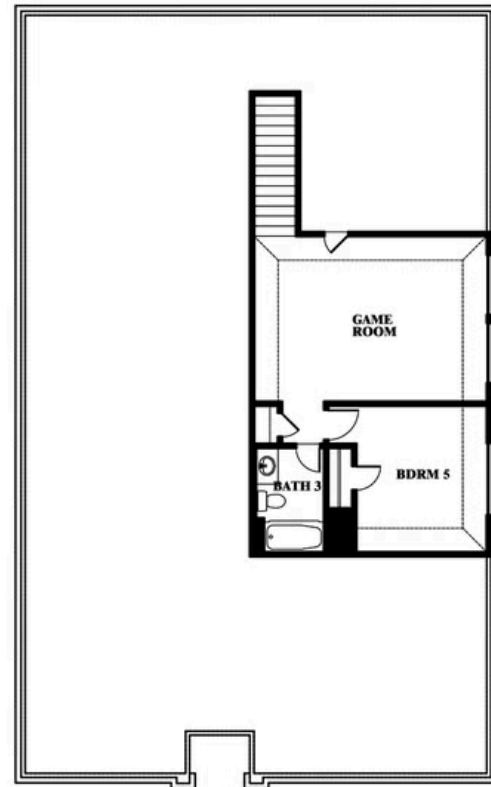
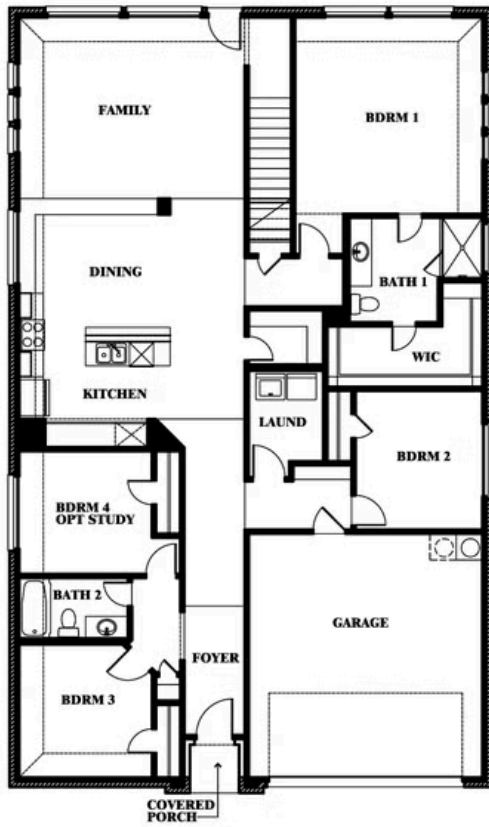
# 1009 Raptor Road

REDBUD II FLOOR PLAN

ALVARADO, TX 76009



## Redbud II



This brochure is for general informational purposes and is to be used as a guide only. Changes may be made during the development process and floorplans, dimensions, fixtures, fittings, finishes and specifications are subject to change without notice. Window placement, balcony configuration, wardrobe sizes and living areas may vary slightly within each plan type. EQUAL HOUSING OPPORTUNITY

