



1001 Raptor Road

ALVARADO, TX 76009

Sales Model

VIOLET IV FLOOR PLAN

2,845 SQUARE FEET	4 BEDROOMS	3.5 BATHROOMS	2 CAR GARAGE
-----------------------------	----------------------	-------------------------	------------------------

EAGLE GLEN

MODEL HOME • 1001 RAPTOR ROAD | VIOLET IV

MODEL HOME • 1009 RAPTOR ROAD | REDBUD II



The Classic Series Violet IV floor plan is a two-story home with four bedrooms and three and a half bathrooms. Features of this plan include a covered patio, large family room with a soaring ceiling, study, open kitchen with custom cabinets and island, media room, game room; and a downstairs primary suite with a garden tub, separate shower, and a walk-in closet. This plan has the option for another bedroom and full bath at the study. Contact us or visit our model home for more information about building this plan.





1001 Raptor Road

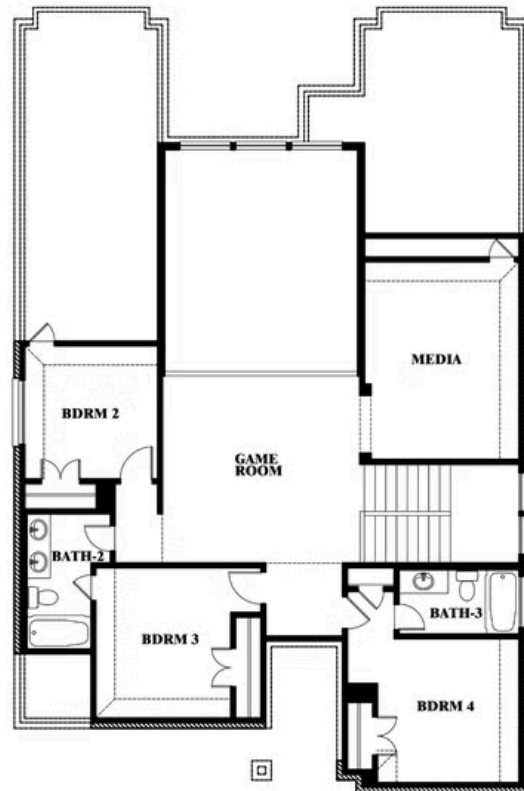
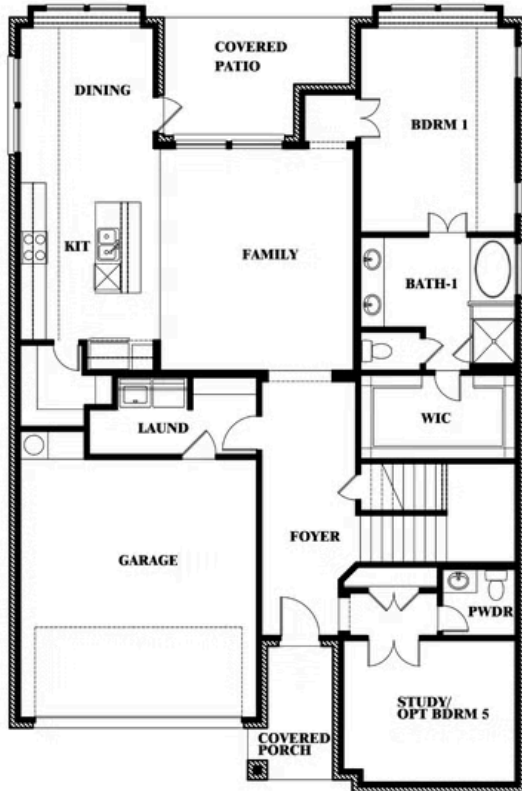
ALVARADO, TX 76009

VIOLET IV FLOOR PLAN

VIOLET IV FLOOR PLAN



Violet IV



This brochure is for general informational purposes and is to be used as a guide only. Changes may be made during the development process and floorplans, dimensions, fixtures, fittings, finishes and specifications are subject to change without notice. Window placement, balcony configuration, wardrobe sizes and living areas may vary slightly within each plan type. EQUAL HOUSING OPPORTUNITY

