



Cypress II

CLASSIC SERIES

HOMES FROM
\$430,990

MEADOW VISTA 50-55

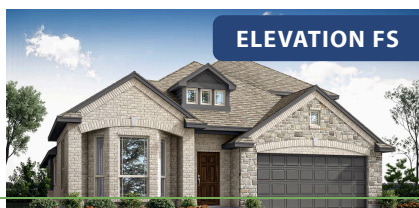
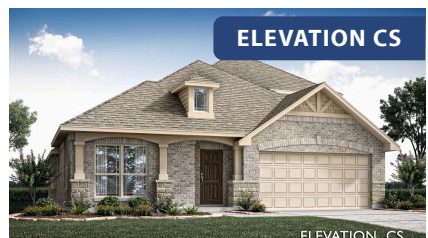
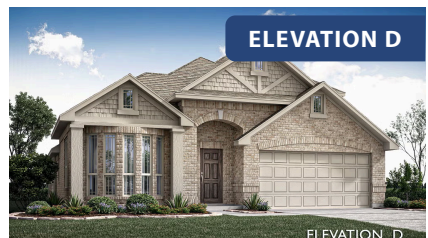
1804 HICKORY CHASE LANE, ANNA, TX 75409

2,454
SQUARE FEET

4
BEDROOMS

3.0
BATHROOMS

2
CAR GARAGE



Documents generated April 24, 2020. All elevations are for informational purposes only, are not binding, and do not create any contractual obligation(s). The price of any home is dependent on numerous factors, all of which are unique to a specific home, and is not guaranteed until specified in a binding contract. Pricing of elevations and additional optional beds/baths varies per plan. Some plans require a premium homesite. Renderings of homes are artist concepts and may not reflect exact colors and materials. Verify current tax rates & jurisdictions with the appropriate taxing authority.





Cypress II

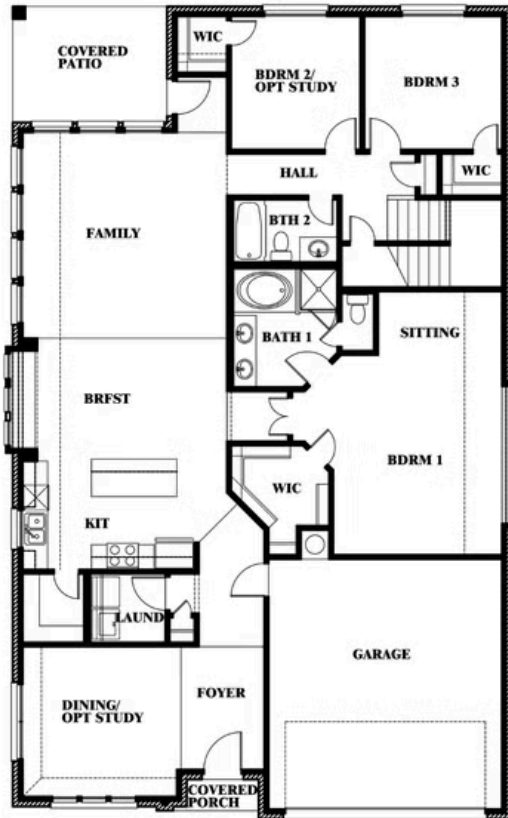
CYPRESS II FLOOR PLAN

MEADOW VISTA 50-55

1804 HICKORY CHASE LANE, ANNA, TX 75409



Cypress II



This brochure is for general informational purposes and is to be used as a guide only. Changes may be made during the development process and floorplans, dimensions, fixtures, fittings, finishes and specifications are subject to change without notice. Window placement, balcony configuration, wardrobe sizes and living areas may vary slightly within each plan type. EQUAL HOUSING OPPORTUNITY





Cypress II

MEADOW VISTA 50-55

1804 HICKORY CHASE LANE, ANNA, TX 75409

CYPRESS II FLOOR PLAN WITH OPTIONAL DELUXE KITCHEN



Cypress II Opt. Deluxe Kitchen



This brochure is for general informational purposes and is to be used as a guide only. Changes may be made during the development process and floorplans, dimensions, fixtures, fittings, finishes and specifications are subject to change without notice. Window placement, balcony configuration, wardrobe sizes and living areas may vary slightly within each plan type. EQUAL HOUSING OPPORTUNITY

