



Primrose FE IV

CLASSIC SERIES

VILLAGES OF HURRICANE CREEK

809 TWIN PINE COURT, ANNA, TX 75409

HOMES FROM
\$608,990

3,543
SQUARE FEET

4
BEDROOMS

3.5
BATHROOMS

3
CAR GARAGE



ELEVATION A



ELEVATION B



ELEVATION C





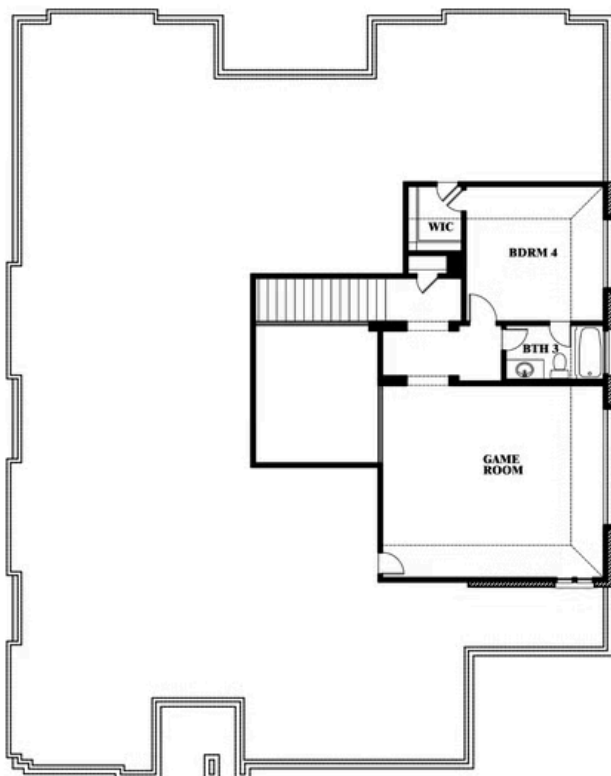
Primrose FE IV

VILLAGES OF HURRICANE CREEK

809 TWIN PINE COURT, ANNA, TX 75409



Primrose FE IV



This brochure is for general informational purposes and is to be used as a guide only. Changes may be made during the development process and floorplans, dimensions, fixtures, fittings, finishes and specifications are subject to change without notice. Window placement, balcony configuration, wardrobe sizes and living areas may vary slightly within each plan type. EQUAL HOUSING OPPORTUNITY

