



# Primrose FE V

CLASSIC SERIES

HOMES FROM  
**\$619,990**

## VILLAGES OF HURRICANE CREEK

3217 CROSS SHORE DRIVE, ANNA, TX 75409

**3,733**  
SQUARE FEET

**4**  
BEDROOMS

**3.5**  
BATHROOMS

**3**  
CAR GARAGE



**ELEVATION B**



**ELEVATION A**



**ELEVATION C**





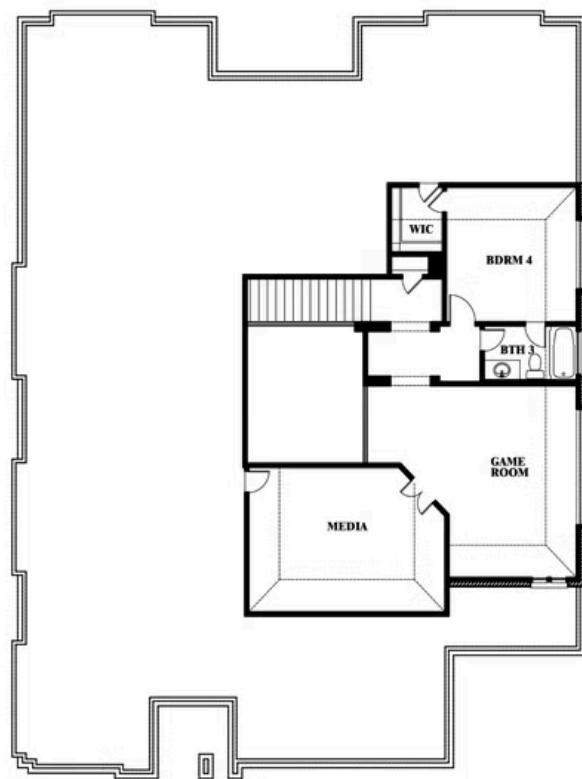
# Primrose FE V

## VILLAGES OF HURRICANE CREEK

3217 CROSS SHORE DRIVE, ANNA, TX 75409



## Primrose FE V



This brochure is for general informational purposes and is to be used as a guide only. Changes may be made during the development process and floorplans, dimensions, fixtures, fittings, finishes and specifications are subject to change without notice. Window placement, balcony configuration, wardrobe sizes and living areas may vary slightly within each plan type. **EQUAL HOUSING OPPORTUNITY**

