



# 124 Whistling Duck Dr

BALCH SPRINGS, TX 75181

ARCADIA TRAILS

CYPRESS II FLOOR PLAN

MODEL HOME • 124 WHISTLING DUCK DR | CYPRESS II

<b>2,459</b> SQUARE FEET	<b>4</b> BEDROOMS	<b>3.0</b> BATHROOMS	<b>2.5</b> CAR GARAGE
-----------------------------	----------------------	-------------------------	--------------------------

MODEL HOME • 126 WHISTLING DUCK DR | CARAWAY

Model Home



The Classic Series Cypress II floor plan is a two-story home with 4 bedrooms and 3 bathrooms. Features of this plan include a covered porch, formal dining or study, a large family room, an open kitchen with custom cabinets and island, a primary suite with walk-in closet and garden tub, and an upstairs game room. Contact us or visit our model home for more information about building this plan.





# 124 Whistling Duck Dr

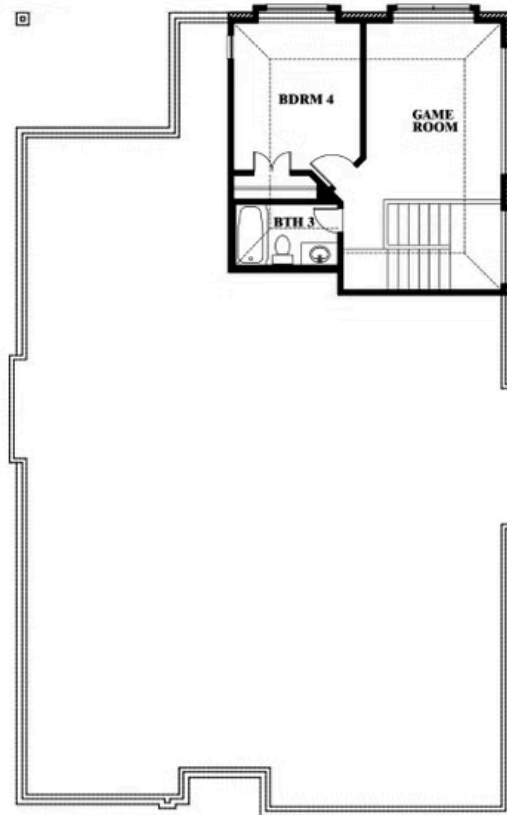
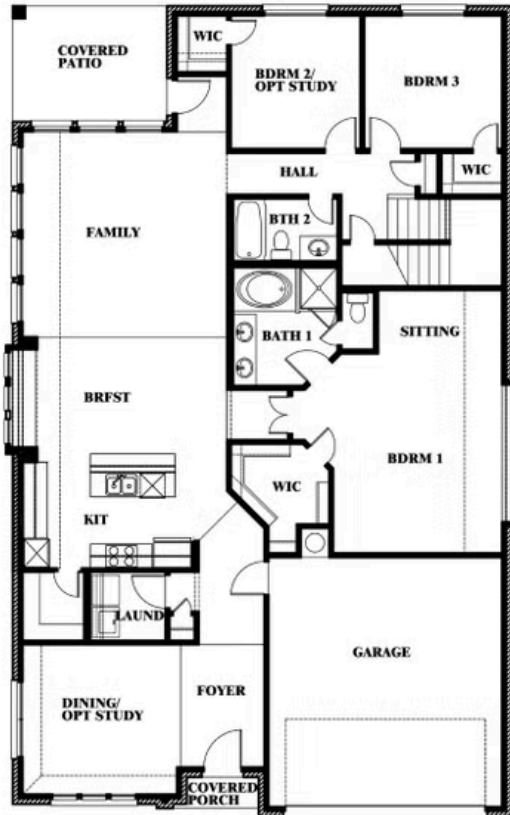
BALCH SPRINGS, TX 75181

CYPRESS II FLOOR PLAN

**CYPRESS II FLOOR PLAN WITH OPTIONAL DELUXE KITCHEN**



## Cypress II Opt. Deluxe Kitchen



This brochure is for general informational purposes and is to be used as a guide only. Changes may be made during the development process and floorplans, dimensions, fixtures, fittings, finishes and specifications are subject to change without notice. Window placement, balcony configuration, wardrobe sizes and living areas may vary slightly within each plan type. EQUAL HOUSING OPPORTUNITY

