



Violet IV

CLASSIC SERIES

HOMES FROM
\$None

ARCADIA TRAILS

124 WHISTLING DUCK DR, BALCH SPRINGS, TX 75181

2,838
SQUARE FEET

4
BEDROOMS

4.5
BATHROOMS

2
CAR GARAGE



ELEVATION A



ELEVATION AS



ELEVATION B



ELEVATION C



ELEVATION D





Violet IV

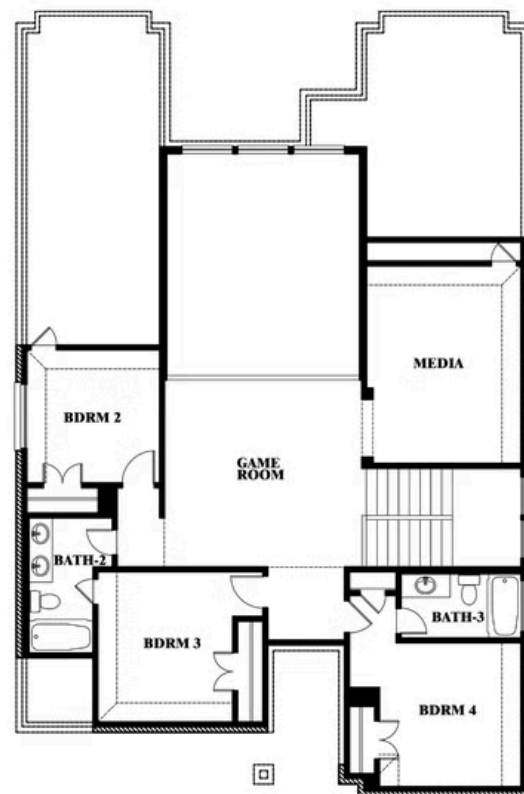
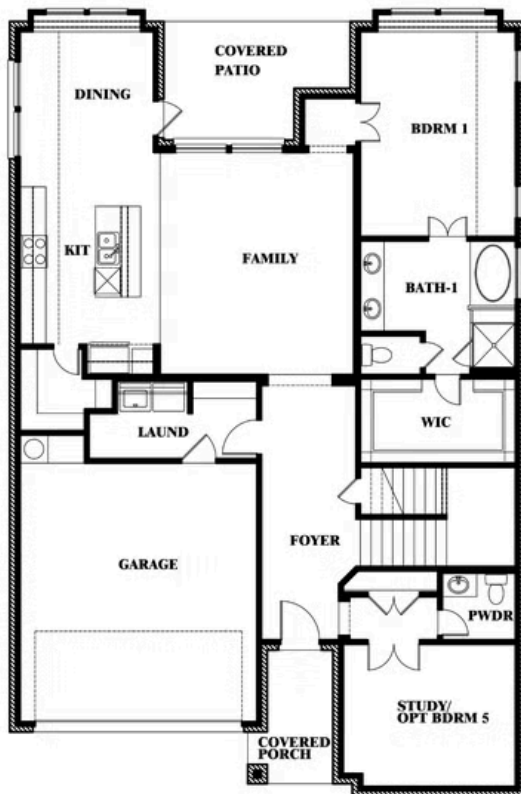
VIOLET IV FLOOR PLAN

ARCADIA TRAILS

124 WHISTLING DUCK DR, BALCH SPRINGS, TX 75181



Violet IV



This brochure is for general informational purposes and is to be used as a guide only. Changes may be made during the development process and floorplans, dimensions, fixtures, fittings, finishes and specifications are subject to change without notice. Window placement, balcony configuration, wardrobe sizes and living areas may vary slightly within each plan type. EQUAL HOUSING OPPORTUNITY





Violet IV

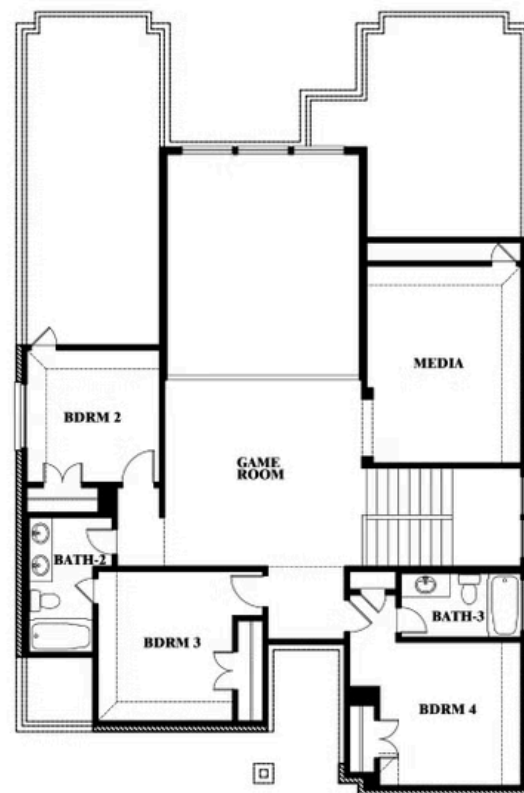
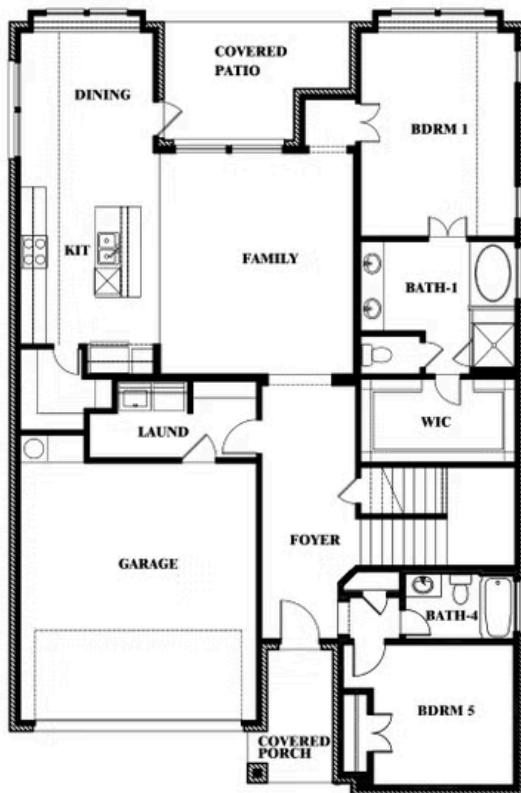
VIOLET IV FLOOR PLAN WITH OPTIONAL BEDROOM AT STUDY

ARCADIA TRAILS

124 WHISTLING DUCK DR, BALCH SPRINGS, TX 75181



Violet IV Opt. Bed 5 & Bath 4 at Study



This brochure is for general informational purposes and is to be used as a guide only. Changes may be made during the development process and floorplans, dimensions, fixtures, fittings, finishes and specifications are subject to change without notice. Window placement, balcony configuration, wardrobe sizes and living areas may vary slightly within each plan type. EQUAL HOUSING OPPORTUNITY



Document generated Dec 20, 2025. Prices, plans, square footage, features, amenities and materials are subject to change at any time without notice and vary among communities. Listed prices are for informational purposes only, are not binding, and do not create any contractual obligation(s). The price of any home is dependent on numerous factors, all of which are unique to a specific home, and is not guaranteed until specified in a binding contract. Pricing of elevations and additional optional beds/baths varies per plan. Some plans require a premium homesite. Renderings of homes are artist concepts and may not reflect exact colors and materials. Verify current tax rates & jurisdictions with the appropriate taxing authority.