

# Violet III

CLASSIC SERIES

## GRACE PARK

LEGACY OAKS LANE, BEDFORD, TX 76021

HOMES FROM  
**\$779,990**

**2,628**  
SQUARE FEET

**4**  
BEDROOMS

**3.5**  
BATHROOMS

**2**  
CAR GARAGE

ELEVATION AS



# Violet III

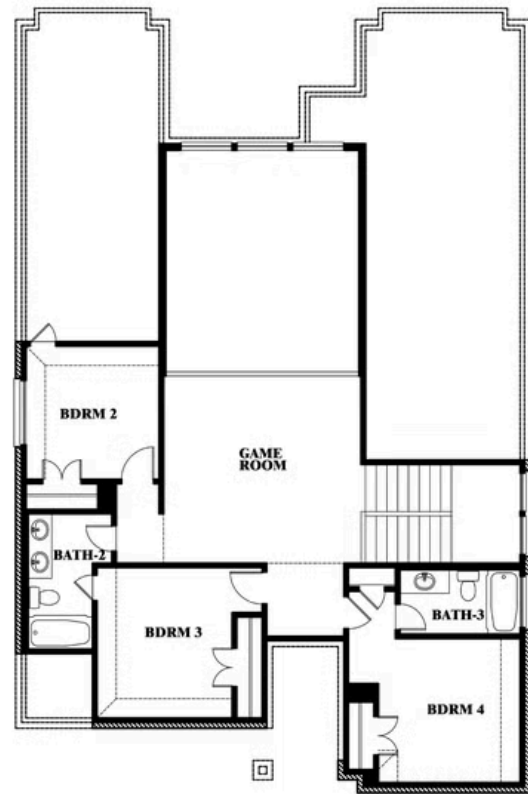
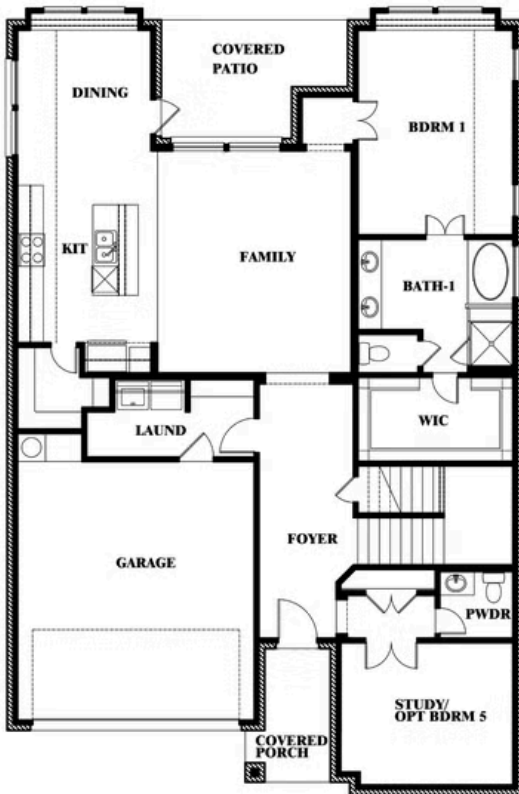
## VIOLET III FLOOR PLAN

## GRACE PARK

LEGACY OAKS LANE, BEDFORD, TX 76021



## Violet III



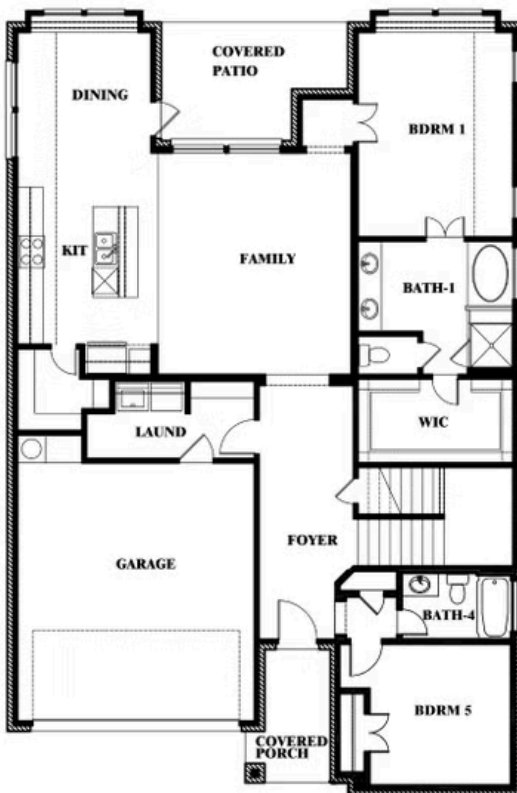
This brochure is for general informational purposes and is to be used as a guide only. Changes may be made during the development process and floorplans, dimensions, fixtures, fittings, finishes and specifications are subject to change without notice. Window placement, balcony configuration, wardrobe sizes and living areas may vary slightly within each plan type. EQUAL HOUSING OPPORTUNITY

# Violet III

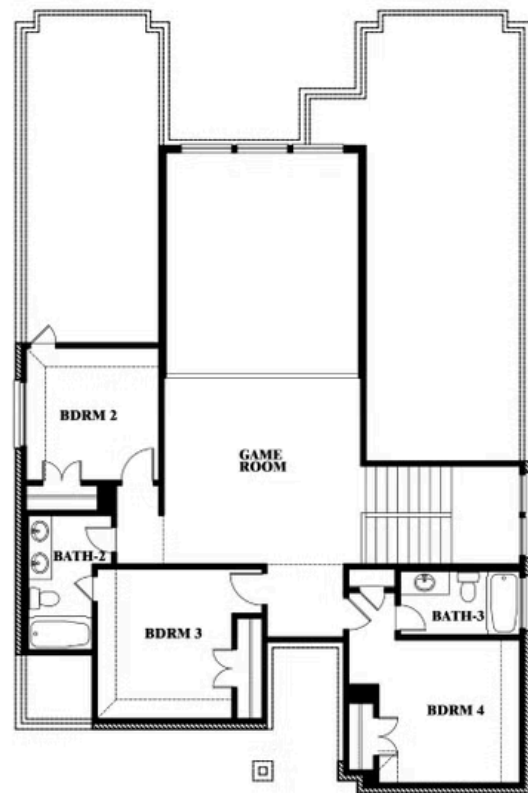
## GRACE PARK

LEGACY OAKS LANE, BEDFORD, TX 76021

### VIOLET III FLOOR PLAN WITH BEDROOM AT STUDY



## Violet III Opt. Bed 5 & Bath 4 at Study



This brochure is for general informational purposes and is to be used as a guide only. Changes may be made during the development process and floorplans, dimensions, fixtures, fittings, finishes and specifications are subject to change without notice. Window placement, balcony configuration, wardrobe sizes and living areas may vary slightly within each plan type. EQUAL HOUSING OPPORTUNITY