



# Parks at Panchasarp Farms

**1,840 – 4,226**  
SQUARE FEET

**3 – 6**  
BEDROOMS

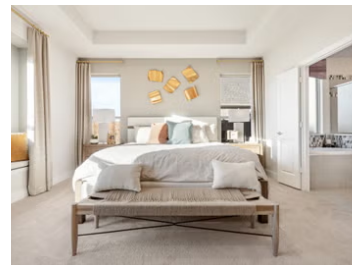
**2 – 5.5**  
BATHROOMS

**2 – 3**  
CAR GARAGE

## MODELS

2641 Alyssa Street, Burleson, TX 76028 | **Seaberry**

2645 Alyssa Street, Burleson, TX 76028 | **Caraway**



Welcome to The Parks at Panchasarp Farms- a breathtaking 220-acre community in Burleson that will leave you in awe!

This fabulous community features an amenity center with a swimming pool, several parks, two playgrounds, walking trails, and several greenbelt areas- with an on-site elementary school being planned for the future. With a prime location just minutes away from both Chisholm Trail Parkway and I-35W, commuting to any area in the metroplex is a breeze.

You'll find plenty of shopping venues, restaurants, cinemas, and other attractions in and around this wonderful community. As a resident, you get to enjoy the quiet atmosphere of The Parks at Panchasarp Farms without losing the conveniences of city life. Students will attend the highly acclaimed Joshua School District.

Don't miss out on this fantastic community - visit us today!



## Parks at Panchasarp Farms

### Community Amenities

- Playground
- Pool
- Restroom Facilities at Pool
- Walk and Bike Trails
- Greenbelts

### Utilities:

- Electric: United Co-op 817.447.9292
- Gas: Atmos Energy 888.286.6700
- Water: Johnson Co. SUD 817.760.5200
- Internet Providers: AT&T 800.288.2020

### Police & Fire

- Police 817.426.9903
- Fire 817.426.9170

### HOA

\$500/year

Legacy Southwest Property Management  
(214) 705-1615 Ext. 7

### Tax

#### Rate Per \$100

2.42

### PID

Parks at Panchasarp Farms Public Improvement District - Contact  
Community manager for more details.

### Schools

<b>District</b>	Joshua ISD
<b>Elementary</b>	North Joshua Elementary School
<b>Middle</b>	R C Loflin Middle School
<b>9th Grade Center</b>	Joshua 9th Grade Campus
<b>High</b>	Joshua High School

### Driving Directions

From I35S exit TX-174 S/NE Wilshire Blvd in Burleson. Follow TX-174 about 5 miles to Lakewood Drive. Turn right on Lakewood Dr which is located between the QuikTrip and Texas Health Family Care center. Take Lakewood Dr 1/2 mile, turn right on Greenridge Dr, right on Vaneer St, and right on Alyssa St. The models are at 2641/2645 Alyssa St.

