



Rose III

HOMES FROM
\$559,990

CLASSIC SERIES

ADDISON HILLS CLASSIC 80S

1706 BALDWIN DRIVE, CEDAR HILL, TX 75104

3,557
SQUARE FEET

5
BEDROOMS

3.5
BATHROOMS

2
CAR GARAGE



ELEVATION B



ELEVATION D

ELEVATION D





Rose III

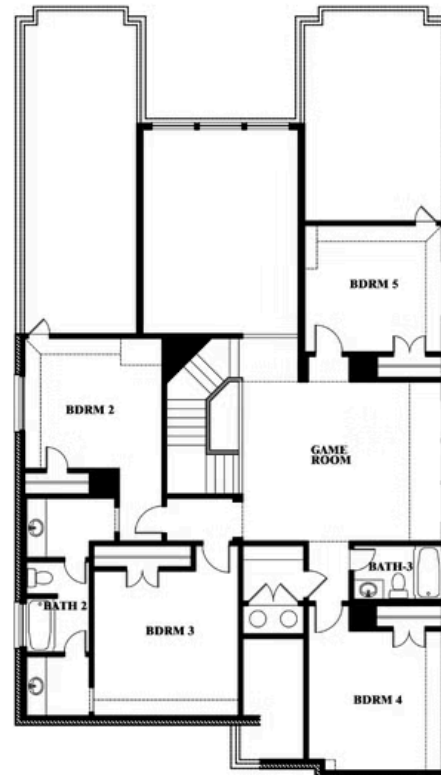
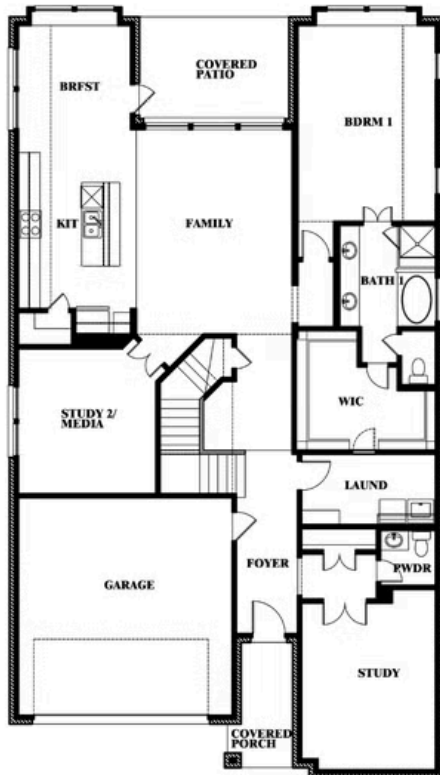
ROSE III FLOOR PLAN

ADDISON HILLS CLASSIC 80S

1706 BALDWIN DRIVE, CEDAR HILL, TX 75104



Rose III



This brochure is for general informational purposes and is to be used as a guide only. Changes may be made during the development process and floorplans, dimensions, fixtures, fittings, finishes and specifications are subject to change without notice. Window placement, balcony configuration, wardrobe sizes and living areas may vary slightly within each plan type. EQUAL HOUSING OPPORTUNITY





Rose III

ADDISON HILLS CLASSIC 80S

1706 BALDWIN DRIVE, CEDAR HILL, TX 75104

ROSE III FLOOR PLAN WITH OPTIONAL BED & BATH AT STUDY



Rose III Opt. Bed & Bath at Study



This brochure is for general informational purposes and is to be used as a guide only. Changes may be made during the development process and floorplans, dimensions, fixtures, fittings, finishes and specifications are subject to change without notice. Window placement, balcony configuration, wardrobe sizes and living areas may vary slightly within each plan type. EQUAL HOUSING OPPORTUNITY



Document generated May 23, 2026. Prices, plans, square footage, features, amenities and materials are subject to change at any time without notice and vary among communities. Listed prices are for informational purposes only, are not binding, and do not create any contractual obligation(s). The price of any home is dependent on numerous factors, all of which are unique to a specific home, and is not guaranteed until specified in a binding contract. Pricing of elevations and additional optional beds/baths varies per plan. Some plans require a premium homesite. Renderings of homes are artist concepts and may not reflect exact colors and materials. Verify current tax rates & jurisdictions with the appropriate taxing authority.