



Dogwood

CLASSIC SERIES

EAST OAK CREEK 50-55

112 SWEETWATER DRIVE, COMMERCE, TX 75428

HOMES FROM
\$315,990

1,840
SQUARE FEET

3
BEDROOMS

2.0
BATHROOMS

2
CAR GARAGE



ELEVATION ES



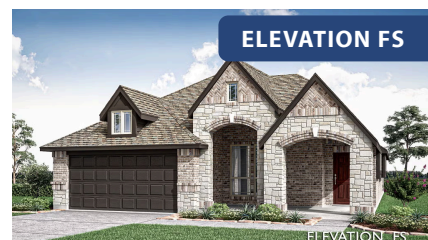
ELEVATION A

ELEVATION A



ELEVATION C

ELEVATION C



ELEVATION FS

ELEVATION FS



ELEVATION G

ELEVATION G



ELEVATION GS

ELEVATION GS





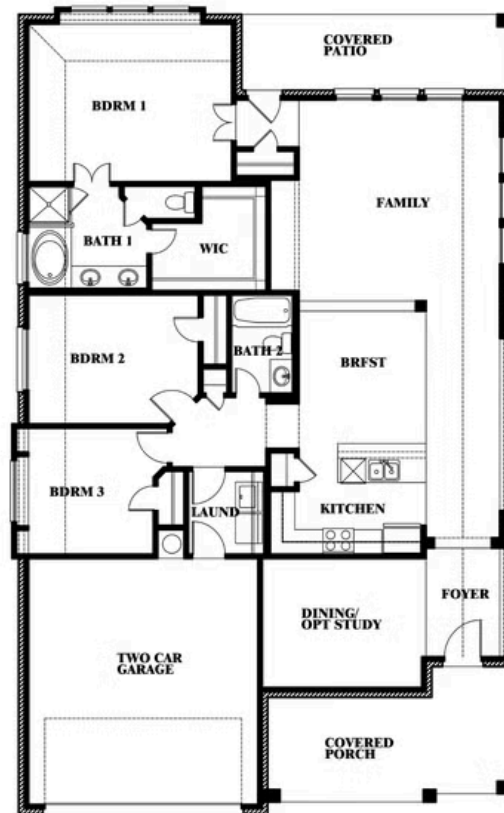
Dogwood

EAST OAK CREEK 50-55

112 SWEETWATER DRIVE, COMMERCE, TX 75428



Dogwood



This brochure is for general informational purposes and is to be used as a guide only. Changes may be made during the development process and floorplans, dimensions, fixtures, fittings, finishes and specifications are subject to change without notice. Window placement, balcony configuration, wardrobe sizes and living areas may vary slightly within each plan type. EQUAL HOUSING OPPORTUNITY