



# 1005 Norcross Court

CROWLEY, TX 76036

**Sales Model**

CAROLINA IV FLOOR PLAN

<b>3,285</b> SQUARE FEET	<b>4</b> BEDROOMS	<b>3.0</b> BATHROOMS	<b>2</b> CAR GARAGE
-----------------------------	----------------------	-------------------------	------------------------

**HUNTERS RIDGE**

MODEL HOME • 1001 NORCROSS COURT | DOGWOOD III

MODEL HOME • 1005 NORCROSS COURT | CAROLINA IV



Model Home

The Classic Series Carolina IV floor plan is a two-story home with four bedrooms, study and three bathrooms. Features of this plan include a rotunda entry, covered porch, formal dining, large family room, open kitchen with custom cabinets and island, a bedroom suite with walk-in closet and garden tub, an upstairs game room, media room and second bedroom suite. Contact us or visit our model home for more information about building this plan.



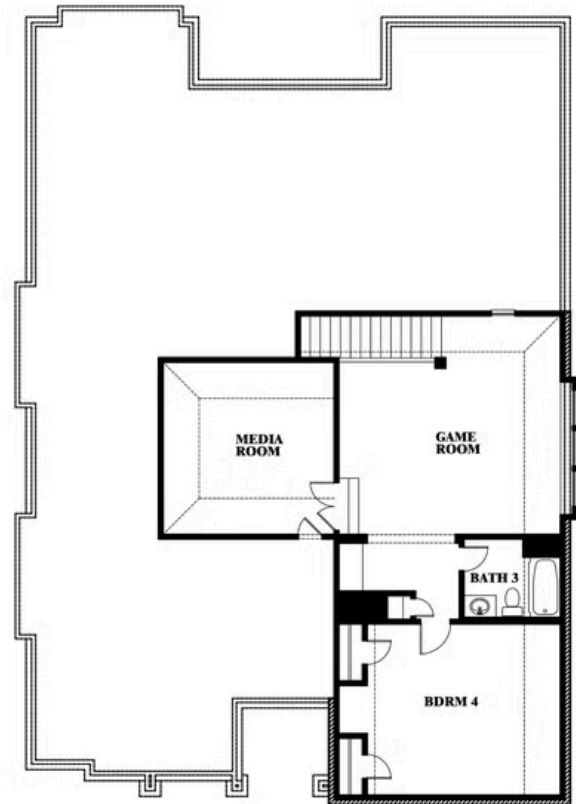
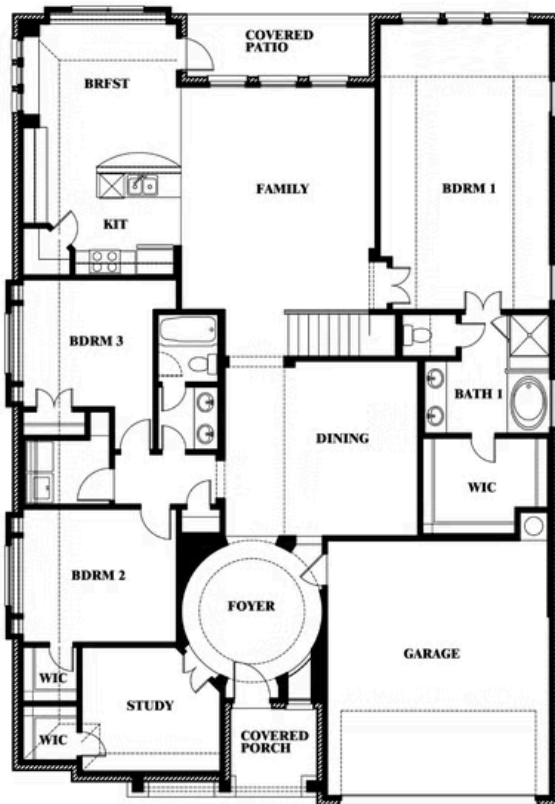


**1005 Norcross Court**

CROWLEY, TX 76036



**Carolina IV**



This brochure is for general informational purposes and is to be used as a guide only. Changes may be made during the development process and floorplans, dimensions, fixtures, fittings, finishes and specifications are subject to change without notice. Window placement, balcony configuration, wardrobe sizes and living areas may vary slightly within each plan type. EQUAL HOUSING OPPORTUNITY

