



# Dewberry III

CLASSIC SERIES

HOMES FROM  
**\$482,990**

## HUNTERS RIDGE

1005 NORCROSS COURT, CROWLEY, TX 76036

**3,261**  
SQUARE FEET

**5**  
BEDROOMS

**3.5**  
BATHROOMS

**2**  
CAR GARAGE



**ELEVATION A**



**ELEVATION AS**

ELEVATION AS



**ELEVATION C**

ELEVATION C



**ELEVATION CS**

ELEVATION CS



**ELEVATION D**

ELEVATION D





# Dewberry III

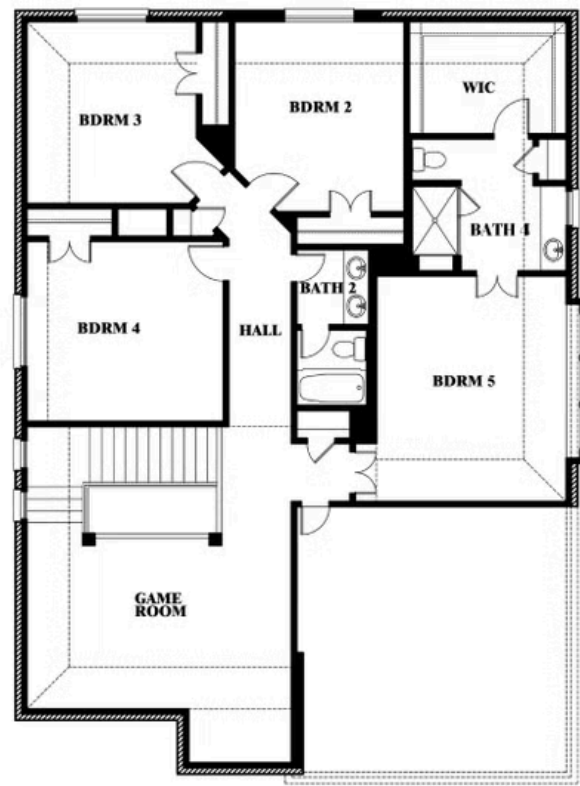
## HUNTERS RIDGE

1005 NORCROSS COURT, CROWLEY, TX 76036

### DEWBERRY III FLOOR PLAN



## Dewberry III



This brochure is for general informational purposes and is to be used as a guide only. Changes may be made during the development process and floor plans, dimensions, fixtures, fittings, finishes and specifications are subject to change without notice. Window placement, balcony configuration, wardrobe sizes and living areas may vary slightly within each plan type. EQUAL HOUSING OPPORTUNITY.





# Dewberry III

## HUNTERS RIDGE

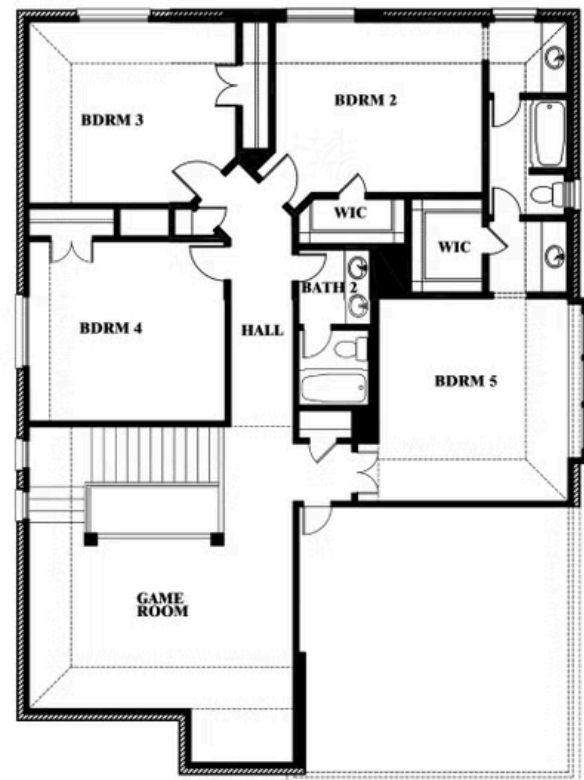
1005 NORCROSS COURT, CROWLEY, TX 76036

**OPT JACK & JILL BATH AT BEDROOM 2 & 5**



## Dewberry III

*Opt. Jack & Jill Bath at Bedroom 2 & 5*



This brochure is for general informational purposes and is to be used as a guide only. Changes may be made during the development process and floorplans, dimensions, fixtures, fittings, finishes and specifications are subject to change without notice. Window placement, balcony configuration, wardrobe sizes and living areas may vary slightly within each plan type. EQUAL HOUSING OPPORTUNITY







# Dewberry III

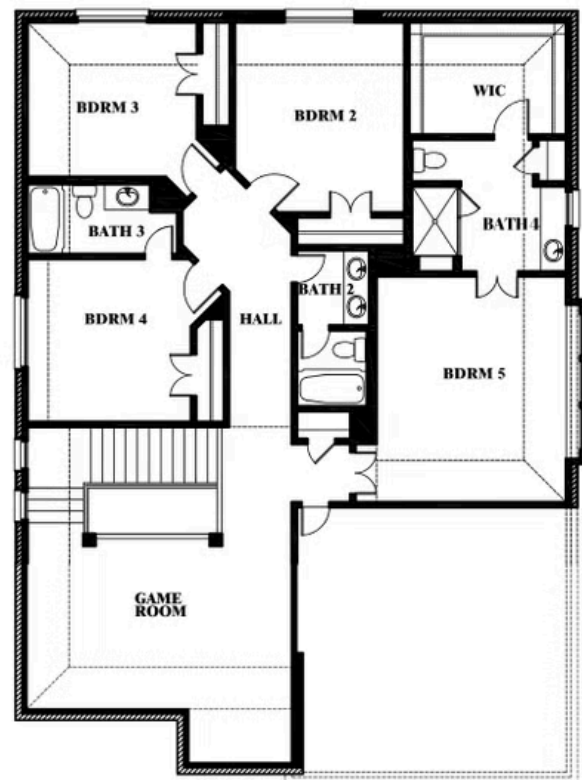
**OPT BATH 3 ENSUITE**

## HUNTERS RIDGE

1005 NORCROSS COURT, CROWLEY, TX 76036



## Dewberry III Opt. Bath 3 Ensuite



This brochure is for general informational purposes and is to be used as a guide only. Changes may be made during the development process and floorplans, dimensions, fixtures, fittings, finishes and specifications are subject to change without notice. Window placement, balcony configuration, wardrobe sizes and living areas may vary slightly within each plan type. EQUAL HOUSING OPPORTUNITY





# Dewberry III

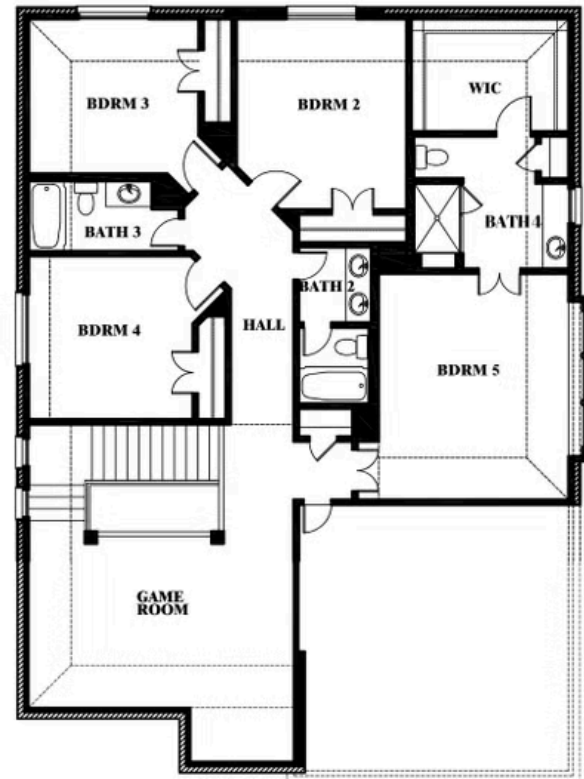
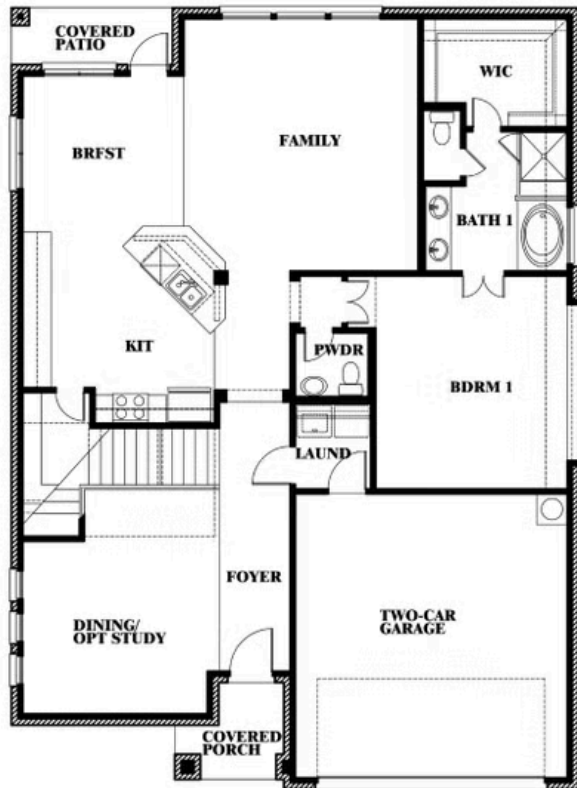
**OPT BATH 3**

## HUNTERS RIDGE

1005 NORCROSS COURT, CROWLEY, TX 76036



## Dewberry III Opt. Bath 3



This brochure is for general informational purposes and is to be used as a guide only. Changes may be made during the development process and floor plans, dimensions, fixtures, fittings, finishes and specifications are subject to change without notice. Window placement, balcony configuration, wardrobe sizes and living areas may vary slightly within each plan type. EQUAL HOUSING OPPORTUNITY.

