



8908 Wichita Lane

DENTON, TX 76226

COUNTRY LAKES CLASSIC 60

BELLFLOWER II FLOOR PLAN

PRICED AT

\$682,990

3785

SQUARE FEET

4

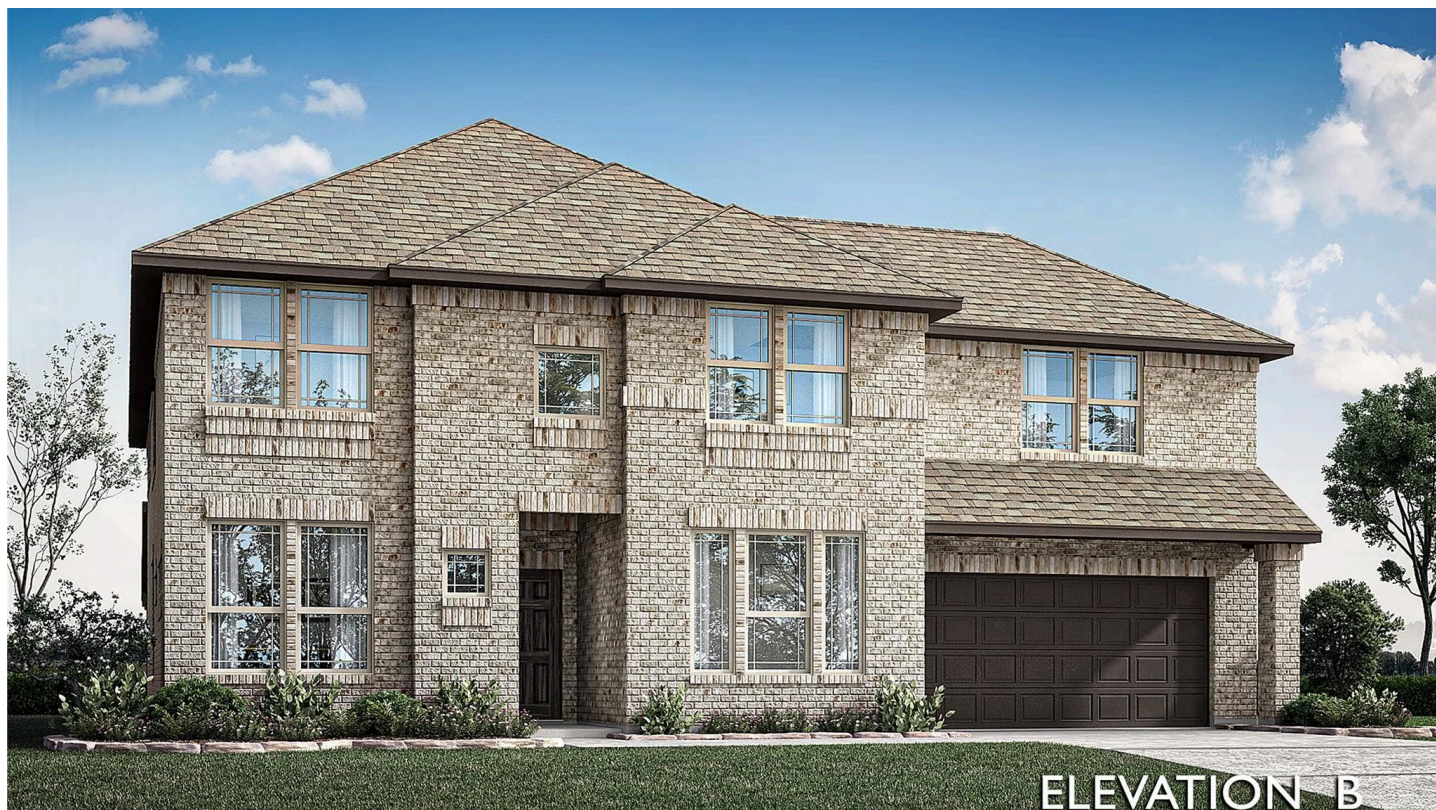
BEDROOMS

3.5

BATHROOMS

2

CAR GARAGE



NEW! NEVER LIVED IN. Under construction with an estimated June 2025 finish. Beautiful Bellflower II plan from Bloomfield Homes - an expansive two-story with 4 bedrooms, 3 full baths, a powder bath, and elegant spaces for entertaining. Tucked inside Denton's Country Lakes community, this home backs up its good looks with thoughtful design and smart upgrades from top to bottom. The modern exterior combines Acme Rapid Falls brick, cedar accents, and a stained fiberglass front door that sets the tone. Downstairs is wide open and made for real living. Engineered wood flooring flows through the entry, study, dining, kitchen, and family room. At the center, a stone-to-mantel fireplace with a rough cedar hearth brings warmth. Just beyond, the custom Deluxe Kitchen delivers with two-tone cabinetry. Built-in appliances, quartz counters, gold marble arabesque mosaic tile, pot and pan drawers on both sides of the cooktop, a trio of pendant lights, and additions at the island drawers. Primary Suite sits quietly at the back of the first floor, with an extended walk-in shower wrapped in vertical mosaic tile, individual vanities, and a large closet that leads into the laundry room. Another bedroom and full bath are also downstairs, ideal for guests or multi-gen living. Upstairs opens to a bright game room and a separate media room ready for movie nights. Throughout the home, matte black hardware, champagne-glazed cabinets, soft-close drawers, and smart lighting add utility. Every detail, from the mud pan tile in the Bath 1 shower to the chevron tile at the mudroom, feels deliberate. Storage is everywhere - walk-in closets, built-ins, and garage extras like a dedicated freezer outlet. Out back, a covered patio with a fan overlooks a yard that's fully sodded and fenced. Floodlights, uplights, and blinds are already installed. Country Lakes offers greenbelt views, walking trails, water features, and quick access to I-35 and Argyle

ISD. Visit our model in Country Lakes to explore more!



Document generated May 21, 2025. Prices, plans, square footage, features and materials are subject to change at any time without notice and vary among communities. Listed prices are for informational purposes only, are not binding, and do not create any contractual obligation(s). The price of any home is dependent on numerous factors, all of which are unique to a specific home, and is not guaranteed until specified in a binding contract. Pricing of elevations and additional optional beds/baths vary per plan. Some plans require a premium homesite. Please ask the Community Manager for details. Renderings of homes are artist concepts and may not reflect exact colors and materials.