



# Primrose FE V

CLASSIC SERIES

## COUNTRY LAKES CLASSIC 60

301 RIVER MEADOWS LANE, DENTON, TX 76226

HOMES FROM  
**\$630,990**

**3,733**  
SQUARE FEET

**4**  
BEDROOMS

**3.5**  
BATHROOMS

**3**  
CAR GARAGE



**ELEVATION A**



**ELEVATION B**

ELEVATION B



**ELEVATION C**

ELEVATION C



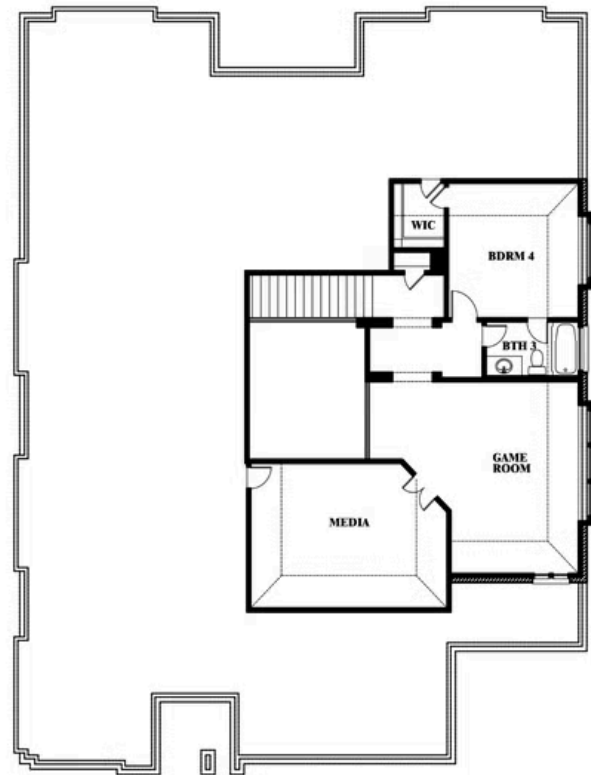


# Primrose FE V

**COUNTRY LAKES CLASSIC 60**  
301 RIVER MEADOWS LANE, DENTON, TX 76226



## Primrose FE V



This brochure is for general informational purposes and is to be used as a guide only. Changes may be made during the development process and floorplans, dimensions, fixtures, fittings, finishes and specifications are subject to change without notice. Window placement, balcony configuration, wardrobe sizes and living areas may vary slightly within each plan type. **EQUAL HOUSING OPPORTUNITY**

