



301 River Meadows Lane

DENTON, TX 76226

COUNTRY LAKES

SPRING CRESS II FLOOR PLAN

3,695 SQUARE FEET	4 BEDROOMS	3.5 BATHROOMS	2 CAR GARAGE
-----------------------------	----------------------	-------------------------	------------------------

MODEL HOME • 301 RIVER MEADOWS LANE | SPRING CRESS II

Model Home



The Classic Series Spring Cress floor plan is a two story home with four bedrooms, three and a half bathrooms, dining room, study, and two media rooms. Lots of flexibility with this floor plan that gives you the option for bedroom 5 with full bath at dining room and an optional bedroom 6 with full bath at the downstairs media room. There is also an optional mini garage in lieu of the dining room. Contact us or visit our model home for more information about this and other available plans.





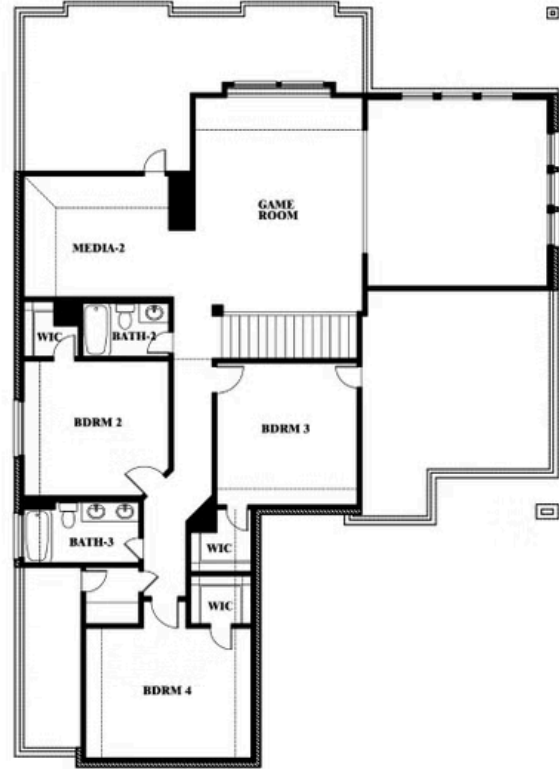
301 River Meadows Lane

SPRING CRESS II FLOOR PLAN

DENTON, TX 76226



Spring Cress II Opt. Bed 6 & Bath 5 at Media



This brochure is for general informational purposes and is to be used as a guide only. Changes may be made during the development process and floorplans, dimensions, fixtures, fittings, finishes and specifications are subject to change without notice. Window placement, balcony configuration, wardrobe sizes and living areas may vary slightly within each plan type. EQUAL HOUSING OPPORTUNITY



Document generated Apr 23, 2026. Prices, plans, square footage, features, amenities and materials are subject to change at any time without notice and vary among communities. Listed prices are for informational purposes only, are not binding, and do not create any contractual obligation(s). The price of any home is dependent on numerous factors, all of which are unique to a specific home, and is not guaranteed until specified in a binding contract. Pricing of elevations and additional optional beds/baths varies per plan. Some plans require a premium homesite. Renderings of homes are artist concepts and may not reflect exact colors and materials. Verify current tax rates & jurisdictions with the appropriate taxing authority.