



# Hawthorne II

CLASSIC SERIES

## GLENWOOD MEADOWS

3017 CREEKHOLLOW COURT, DENTON, TX 76226

HOMES FROM  
**\$569,990**

**2,752**  
SQUARE FEET

**4**  
BEDROOMS

**3.0**  
BATHROOMS

**2**  
CAR GARAGE



**ELEVATION A**



**ELEVATION B**

**ELEVATION B**



**ELEVATION C**

**ELEVATION C**





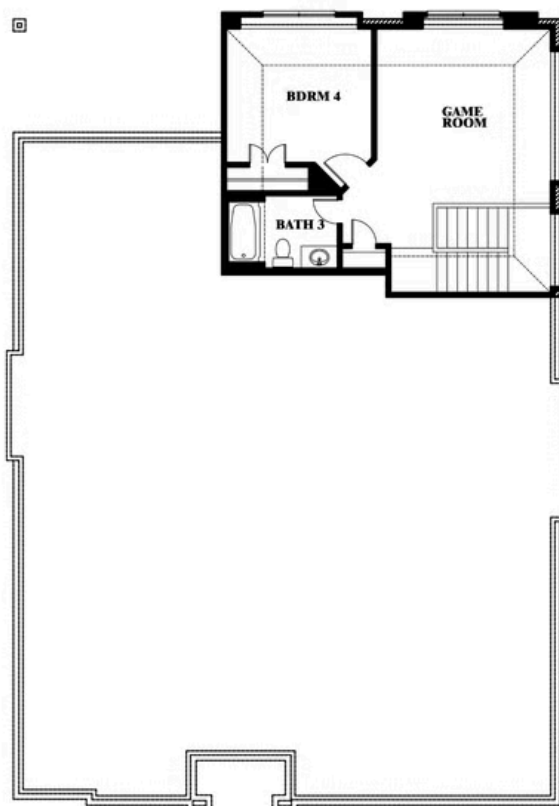
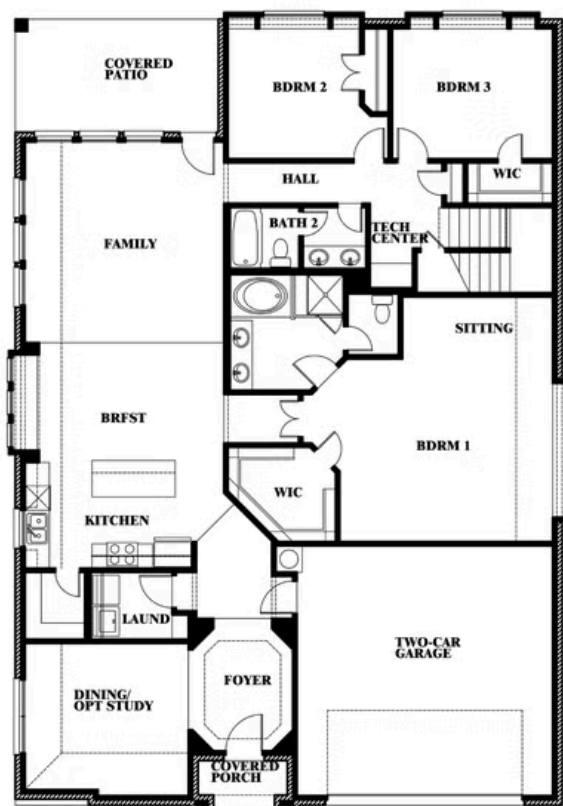
# Hawthorne II

## GLENWOOD MEADOWS

3017 CREEKHOLLOW COURT, DENTON, TX 76226



## Hawthorne II



This brochure is for general informational purposes and is to be used as a guide only. Changes may be made during the development process and floorplans, dimensions, fixtures, fittings, finishes and specifications are subject to change without notice. Window placement, balcony configuration, wardrobe sizes and living areas may vary slightly within each plan type. **EQUAL HOUSING OPPORTUNITY**





# Hawthorne II

## GLENWOOD MEADOWS

3017 CREEKHOLLOW COURT, DENTON, TX 76226



## Hawthorne II *Opt. Deluxe Kitchen*



This brochure is for general informational purposes and is to be used as a guide only. Changes may be made during the development process and floorplans, dimensions, fixtures, fittings, finishes and specifications are subject to change without notice. Window placement, balcony configuration, wardrobe sizes and living areas may vary slightly within each plan type. **EQUAL HOUSING OPPORTUNITY**

