



Magnolia II

CLASSIC SERIES

GLENWOOD MEADOWS

3017 CREEKHOLLOW COURT, DENTON, TX 76226

HOMES FROM
\$594,990

3,430
SQUARE FEET

4
BEDROOMS

2.5
BATHROOMS

2
CAR GARAGE



ELEVATION F



ELEVATION CS

ELEVATION-CS



ELEVATION D

ELEVATION-D



ELEVATION AS

ELEVATION-AS



ELEVATION C

ELEVATION-C



ELEVATION A

ELEVATION-A





Magnolia II

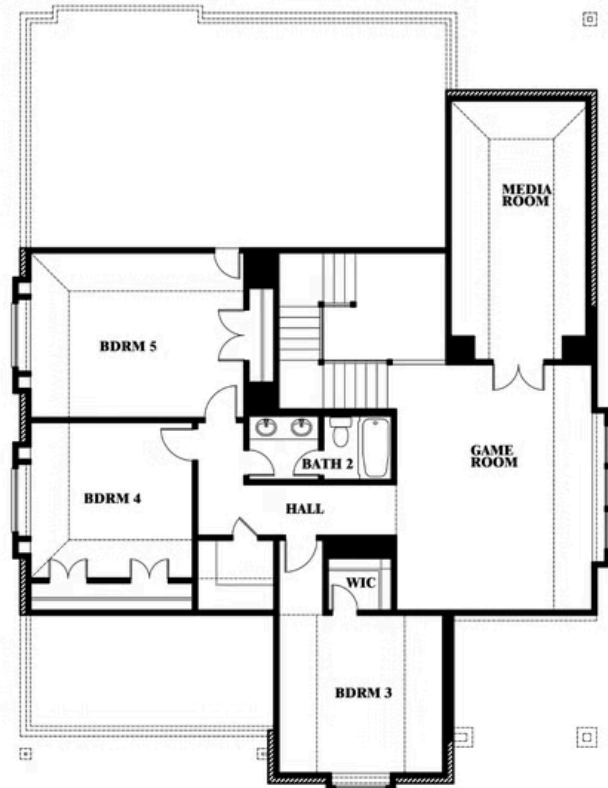
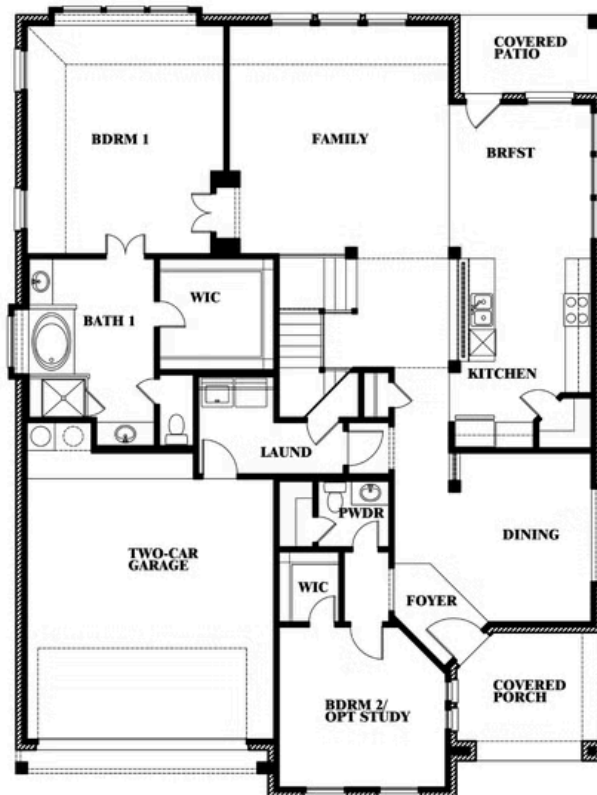
GLENWOOD MEADOWS

3017 CREEKHOLLOW COURT, DENTON, TX 76226

MAGNOLIA II FLOOR PLAN



Magnolia II



This brochure is for general informational purposes and is to be used as a guide only. Changes may be made during the development process and floorplans, dimensions, fixtures, fittings, finishes and specifications are subject to change without notice. Window placement, balcony configuration, wardrobe sizes and living areas may vary slightly within each plan type. EQUAL HOUSING OPPORTUNITY



Document generated Feb 8, 2026. Prices, plans, square footage, features, amenities and materials are subject to change at any time without notice and vary among communities. Listed prices are for informational purposes only, are not binding, and do not create any contractual obligation(s). The price of any home is dependent on numerous factors, all of which are unique to a specific home, and is not guaranteed until specified in a binding contract. Pricing of elevations and additional optional beds/baths varies per plan. Some plans require a premium homesite. Renderings of homes are artist concepts and may not reflect exact colors and materials. Verify current tax rates & jurisdictions with the appropriate taxing authority.