



# Creeks of Homestead

941 Palmer Lane  
DeSoto, TX 75115

*Selling from Homestead at Daniel Farms*

## MODELS

937 Palmer Lane, Desoto, TX 75115

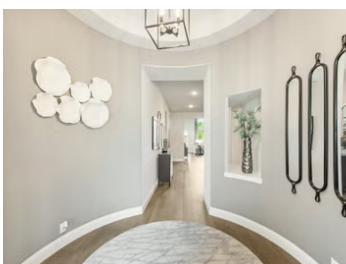
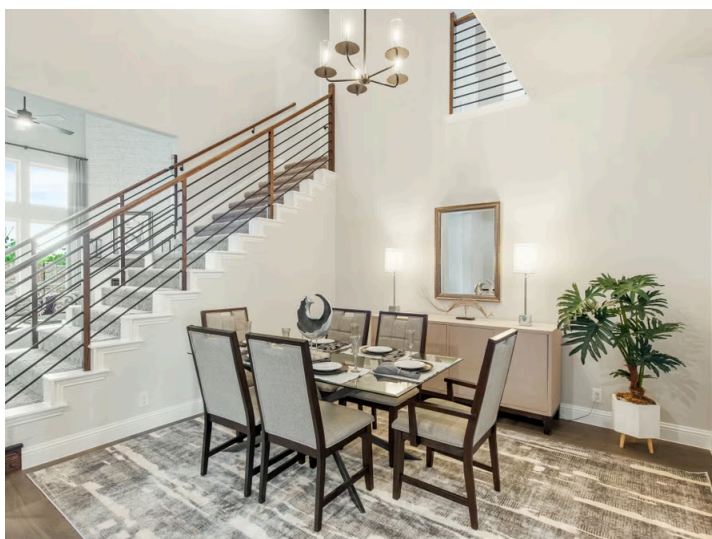
941 Palmer Lane, Desoto, TX 75115

**1,840 – 4,226**  
SQUARE FEET

**3 – 5**  
BEDROOMS

**2 – 5.5**  
BATHROOMS

**2 – 3**  
CAR GARAGE



Welcome to Creeks of Homestead, the newest community from Bloomfield Homes located adjacent to the highly popular Homestead at Daniel Farms community in Desoto, TX!

Creeks of Homestead boasts beautiful topography with rolling hills, a creek, scenic views, and a four-mile winding trail throughout the community that leads to an attractive open greenspace. Creeks of Homestead is centrally located in DeSoto with easy access to major thoroughfares, making an easy commute to downtown Dallas, Grand Prairie, and Arlington. Also nearby, you'll find great shopping and dining opportunities, as well as beautiful parks and nature preserves. Students will attend the highly ranked and popular Duncanville ISD schools.

Stop by and take a look at Creeks of Homestead today!





## Creeks of Homestead

### Community Amenities:

- 4-mile Trail
- Greenbelt
- Near Thorntree Country Club

### Local Area Amenities:

- Grimes Park
- Moseley Pool
- Historic Nance Park
- Cedar Hill State Park

### Utilities:

- Electric: Reliant 866.222.7100
- Gas: Atmos Energy 888.286.6700
- Water: City of DeSoto 972.230.9627
- Trash and Recycling: Republic Services 972.230.9600
- Police Dept | 469.658.3000
- Fire Dept | 972.230.5720

### HOA

Wildwood Group

### Tax

#### PID

Danieldale Homestead PID - Contact Community manager for more details.

### Schools

<b>District</b>	Duncanville ISD
<b>Elementary</b>	Alexander Elementary
<b>Middle</b>	Reed Middle School
<b>High</b>	Duncanville High School

### Driving Directions

Selling from Homestead at Daniel Farms: From Interstate 20, take the exit to US 67 south. Exit S. Cockrell Hill Road, and turn south onto S. Cockrell Hill Road. Left on Danieldale Road. Right on Homestead Drive. Left on Palmer Lane. Our Model Homes are on your left.

