



Creeks of Homestead

SELLING FROM HOMESTEAD AT DANIEL FARMS

1,840 – 4,226
SQUARE FEET

3 – 6
BEDROOMS

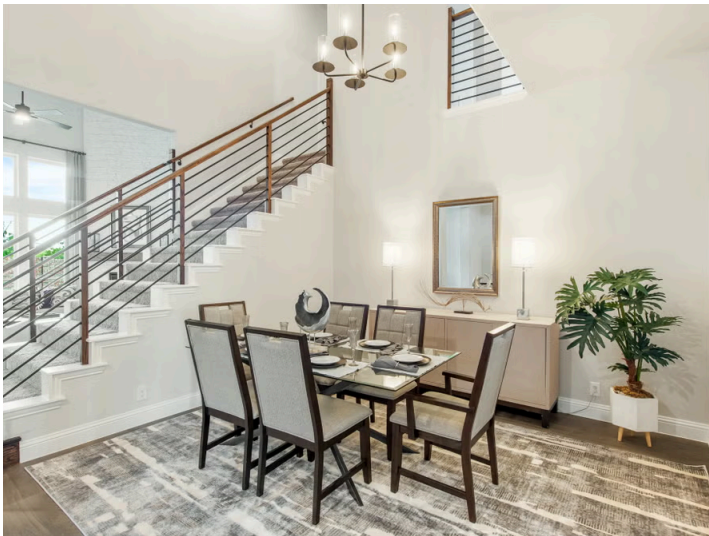
2 – 5.5
BATHROOMS

2 – 3
CAR GARAGE

MODELS

937 Palmer Lane, Desoto, TX 75115 | **Rose II**

941 Palmer Lane, Desoto, TX 75115 | **Primrose FEVI**



Welcome to Creeks of Homestead, the newest community from Bloomfield Homes located adjacent to the highly popular Homestead at Daniel Farms community in Desoto, TX!

Creeks of Homestead boasts beautiful topography with rolling hills, a creek, scenic views, and a four-mile winding trail throughout the community that leads to an attractive open greenspace. Creeks of Homestead is centrally located in DeSoto with easy access to major thoroughfares, making an easy commute to downtown Dallas, Grand Prairie, and Arlington. Also nearby, you'll find great shopping and dining opportunities, as well as beautiful parks and nature preserves. Students will attend the highly ranked and popular Duncanville ISD schools.

Stop by and take a look at Creeks of Homestead today!



Creeks of Homestead

Community Amenities:

- 4-mile Trail
- Greenbelt
- Near Thorntree Country Club

Local Area Amenities:

- Grimes Park
- Moseley Pool
- Historic Nance Park
- Cedar Hill State Park

Utilities:

- Electric: Reliant 866.222.7100
- Gas: Atmos Energy 888.286.6700
- Water: City of DeSoto 972.230.9627
- Trash and Recycling: Republic Services 972.230.9600
- Police Dept | 469.658.3000
- Fire Dept | 972.230.5720

HOA

Wildwood Group

Tax

PID

Danieldale Homestead PID - Contact Community manager for more details.

Schools

District	Duncanville ISD
Elementary	Alexander Elementary
Middle	Reed Middle School
High	Duncanville High School

Driving Directions

Selling from Homestead at Daniel Farms: From Interstate 20, take the exit to US 67 south. Exit S. Cockrell Hill Road, and turn south onto S. Cockrell Hill Road. Left on Danieldale Road. Right on Homestead Drive. Left on Palmer Lane. Our Model Homes are on your left.

