



# Primrose FE V

CLASSIC SERIES

HOMES FROM  
**\$601,990**

**HOMESTEAD AT DANIEL FARMS PHASE 2**

941 PALMER LANE, DESOTO, TX 75115

**3,733**  
SQUARE FEET

**4**  
BEDROOMS

**3.5**  
BATHROOMS

**3**  
CAR GARAGE





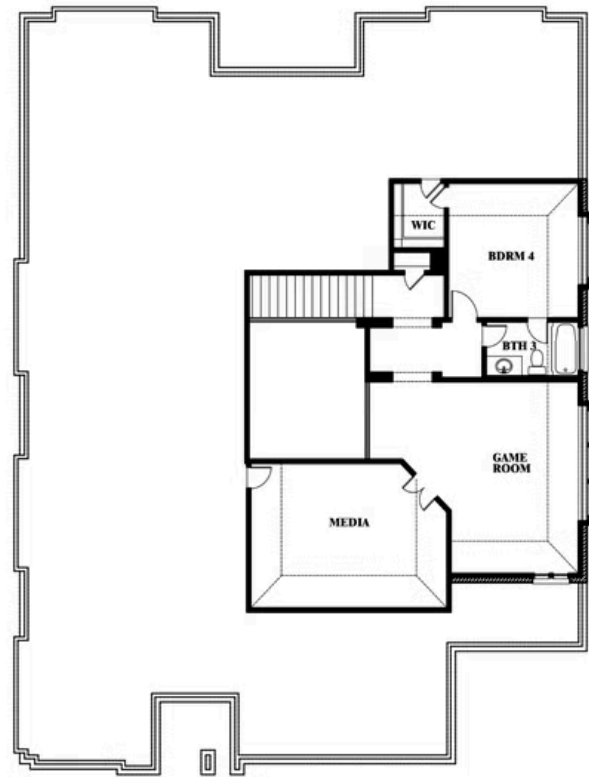
# Primrose FE V

## HOMESTEAD AT DANIEL FARMS PHASE 2

941 PALMER LANE, DESOTO, TX 75115



## Primrose FE V



This brochure is for general informational purposes and is to be used as a guide only. Changes may be made during the development process and floorplans, dimensions, fixtures, fittings, finishes and specifications are subject to change without notice. Window placement, balcony configuration, wardrobe sizes and living areas may vary slightly within each plan type. EQUAL HOUSING OPPORTUNITY

