



Primrose FE VI

HOMES FROM
\$631,990

CLASSIC SERIES

HOMESTEAD AT DANIEL FARMS PHASE 2

941 PALMER LANE, DESOTO, TX 75115

4,065
SQUARE FEET

5
BEDROOMS

4.5
BATHROOMS

3
CAR GARAGE



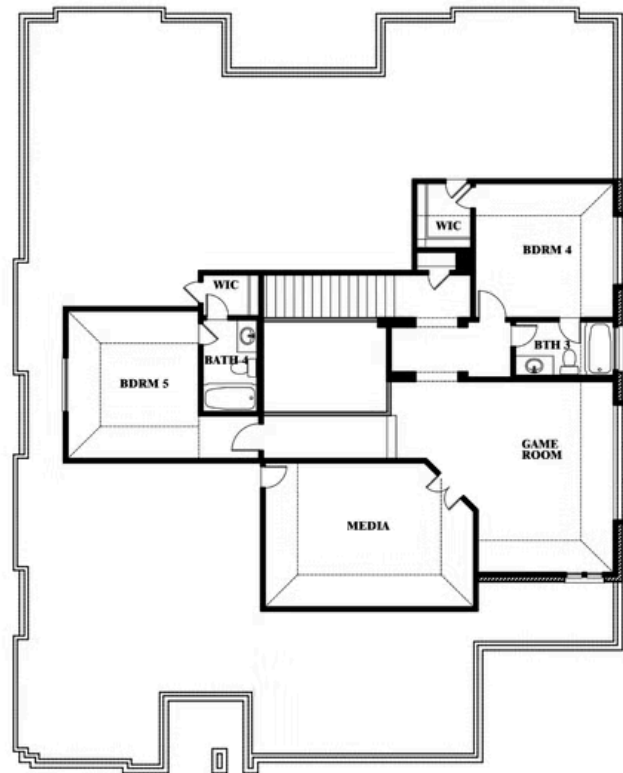


Primrose FE VI

HOMESTEAD AT DANIEL FARMS PHASE 2
941 PALMER LANE, DESOTO, TX 75115



Primrose FE VI



This brochure is for general informational purposes and is to be used as a guide only. Changes may be made during the development process and floorplans, dimensions, fixtures, fittings, finishes and specifications are subject to change without notice. Window placement, balcony configuration, wardrobe sizes and living areas may vary slightly within each plan type. EQUAL HOUSING OPPORTUNITY

