



941 Palmer Lane

DESOTO, TX 75115

Sales Model

PRIMROSE FE VI FLOOR PLAN

4,065 SQUARE FEET	5 BEDROOMS	4.5 BATHROOMS	3 CAR GARAGE
-----------------------------	----------------------	-------------------------	------------------------

HOMESTEAD AT DANIEL FARMS

MODEL HOME • 937 PALMER LANE | ROSE II

MODEL HOME • 941 PALMER LANE | PRIMROSE FE VI

Model Home



The Classic Series Primrose FE VI floor plan is a two-story home with five bedrooms and four and a half bathrooms. Features of this plan include a rotunda entry, formal dining, study, large family room, open kitchen with custom cabinets and island, a bedroom suite with walk-in closet and garden tub, and upstairs game room and media room. Contact us or visit our model home for more information about building this plan.





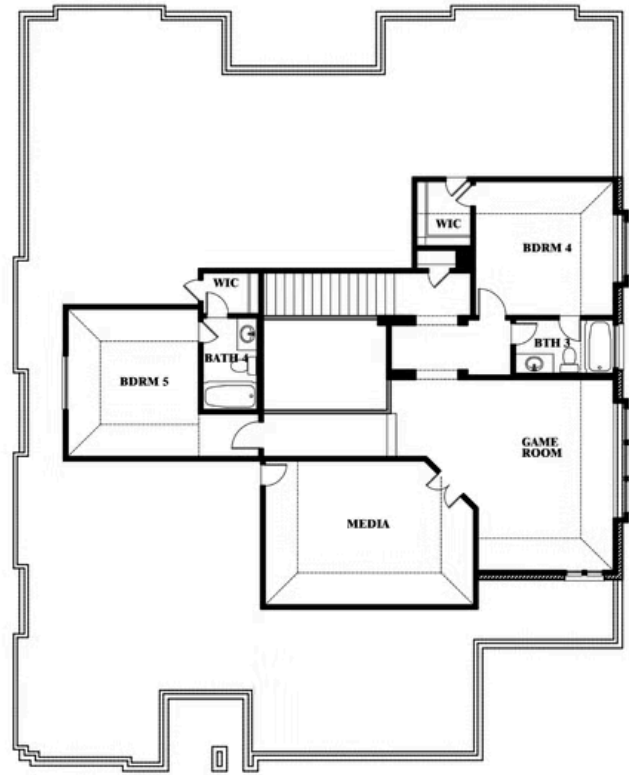
941 Palmer Lane

DESOTO, TX 75115

PRIMROSE FE VI FLOOR PLAN



Primrose FE VI



This brochure is for general informational purposes and is to be used as a guide only. Changes may be made during the development process and floorplans, dimensions, fixtures, fittings, finishes and specifications are subject to change without notice. Window placement, balcony configuration, wardrobe sizes and living areas may vary slightly within each plan type. EQUAL HOUSING OPPORTUNITY

