



Dogwood III

CLASSIC SERIES

DEVONSHIRE CLASSIC 50-55

1404 HOLMESFIELD DR, FORNEY, TX 75126

HOMES FROM
\$413,990

2,333
SQUARE FEET

4
BEDROOMS

3.0
BATHROOMS

2
CAR GARAGE



ELEVATION C



ELEVATION A



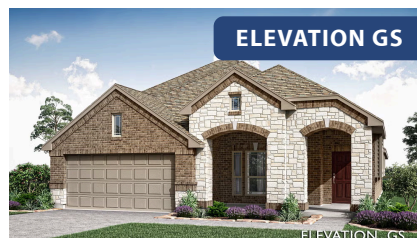
ELEVATION ES



ELEVATION FS



ELEVATION G



ELEVATION GS





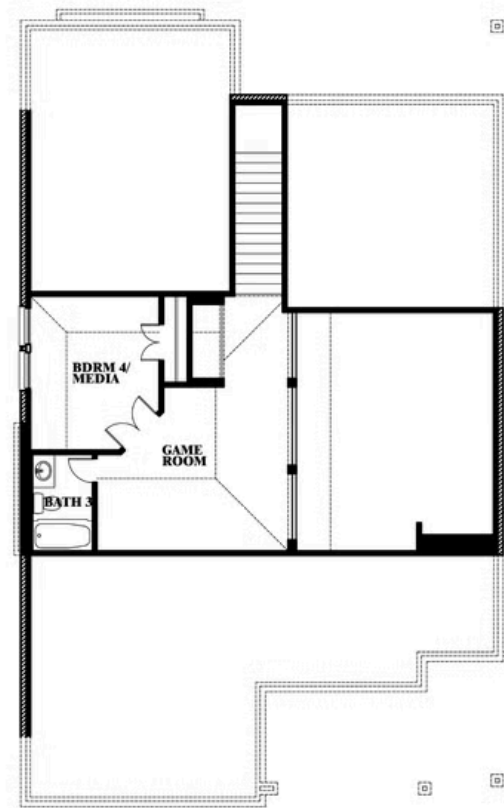
Dogwood III

DEVONSHIRE CLASSIC 50-55

1404 HOLMESFIELD DR, FORNEY, TX 75126



Dogwood III



This brochure is for general informational purposes and is to be used as a guide only. Changes may be made during the development process and floorplans, dimensions, fixtures, fittings, finishes and specifications are subject to change without notice. Window placement, balcony configuration, wardrobe sizes and living areas may vary slightly within each plan type. **EQUAL HOUSING OPPORTUNITY**

