



1406 Holmesfield Dr

FORNEY, TX 75126

DEVONSHIRE
JASMINE FLOOR PLAN

2098
SQUARE FEET

3
BEDROOMS

2.0
BATHROOMS

2
CAR GARAGE

Model Home



ELEVATION AS

The Classic Series Jasmine floor plan is a single-story home with four bedrooms and two bathrooms. Features of this plan include a covered porch, large family room, open kitchen with custom cabinets and an island, and a primary suite with an ensuite bathroom and a walk-in closet. Contact us or visit our model home for more information about building this plan.





1406 Holmesfield Dr

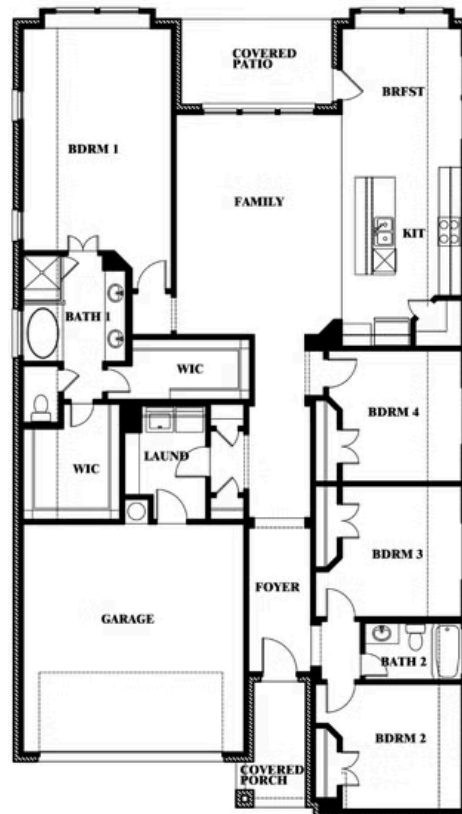
FORNEY, TX 75126

JASMINE FLOOR PLAN

JASMINE FLOOR PLAN



Jasmine



This brochure is for general informational purposes and is to be used as a guide only. Changes may be made during the development process and floorplans, dimensions, fixtures, fittings, finishes and specifications are subject to change without notice. Window placement, balcony configuration, wardrobe sizes and living areas may vary slightly within each plan type. EQUAL HOUSING OPPORTUNITY

