



1406 Holmesfield Drive

DEVONSHIRE

FORNEY, TX 75126

JASMINE FLOOR PLAN

| | | | |
|-----------------------------|----------------------|-------------------------|------------------------|
| 2,098 SQUARE FEET | 3 BEDROOMS | 2.0 BATHROOMS | 2 CAR GARAGE |
|-----------------------------|----------------------|-------------------------|------------------------|

MODEL HOME • 1404 HOLMESFIELD DRIVE | VIOLET IV

MODEL HOME • 1406 HOLMESFIELD DRIVE | JASMINE

Model Home



The Classic Series Jasmine floor plan is a single-story home with four bedrooms and two bathrooms. Features of this plan include a covered porch, large family room, open kitchen with custom cabinets and an island, and a primary suite with an ensuite bathroom and a walk-in closet. Contact us or visit our model home for more information about building this plan.





1406 Holmesfield Drive

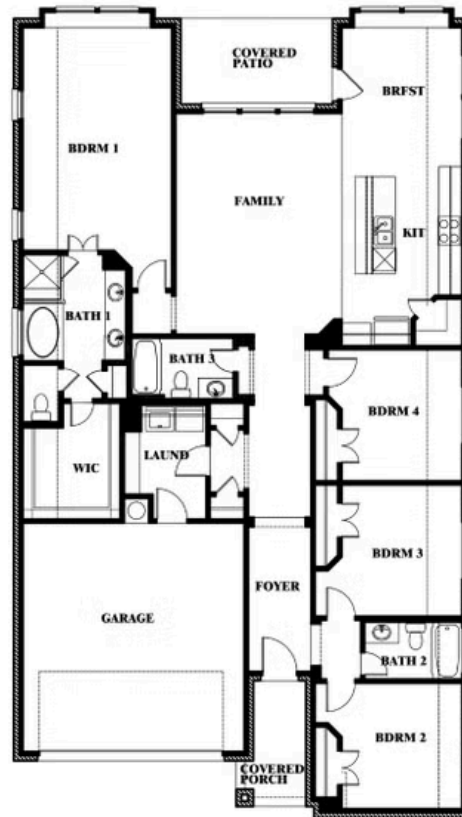
FORNEY, TX 75126

JASMINE FLOOR PLAN

JASMINE FLOOR PLAN WITH OPTIONAL BATH 3



Jasmine
Opt. Bath 3 at Closet



This brochure is for general informational purposes and is to be used as a guide only. Changes may be made during the development process and floorplans, dimensions, fixtures, fittings, finishes and specifications are subject to change without notice. Window placement, balcony configuration, wardrobe sizes and living areas may vary slightly within each plan type. EQUAL HOUSING OPPORTUNITY

