



Dogwood III

CLASSIC SERIES

HOMES FROM
\$424,990

HULEN TRAILS

10628 MOSS COVE DRIVE, FORT WORTH, TX 76036

2,333
SQUARE FEET

4
BEDROOMS

3.0
BATHROOMS

2
CAR GARAGE



ELEVATION C



ELEVATION A



ELEVATION ES



ELEVATION FS



ELEVATION G



ELEVATION GS





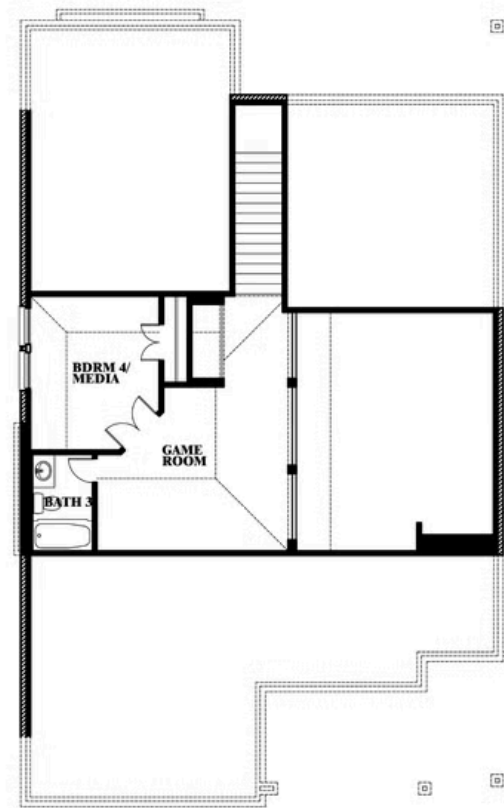
Dogwood III

HULEN TRAILS

10628 MOSS COVE DRIVE, FORT WORTH, TX 76036



Dogwood III



This brochure is for general informational purposes and is to be used as a guide only. Changes may be made during the development process and floorplans, dimensions, fixtures, fittings, finishes and specifications are subject to change without notice. Window placement, balcony configuration, wardrobe sizes and living areas may vary slightly within each plan type. **EQUAL HOUSING OPPORTUNITY**

