



Cypress II

CLASSIC SERIES

HOMES FROM
\$483,990

COYOTE CROSSING

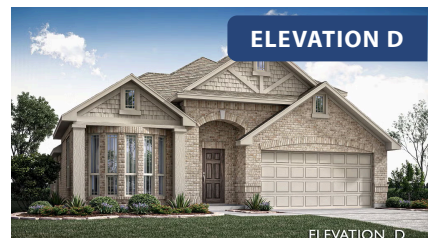
12524 YELLOWSTONE STREET, GODLEY, TX 76044

2,454
SQUARE FEET

4
BEDROOMS

3.0
BATHROOMS

2
CAR GARAGE





Cypress II

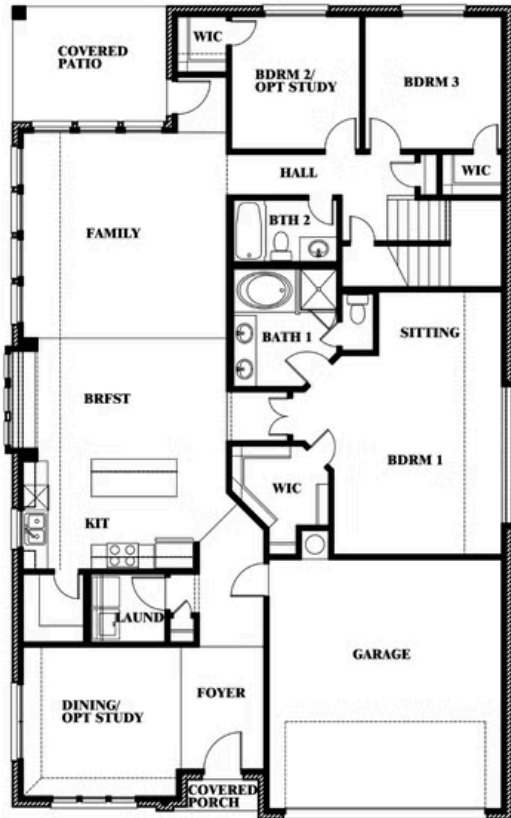
CYPRESS II FLOOR PLAN

COYOTE CROSSING

12524 YELLOWSTONE STREET, GODLEY, TX 76044



Cypress II



This brochure is for general informational purposes and is to be used as a guide only. Changes may be made during the development process and floorplans, dimensions, fixtures, fittings, finishes and specifications are subject to change without notice. Window placement, balcony configuration, wardrobe sizes and living areas may vary slightly within each plan type. EQUAL HOUSING OPPORTUNITY





Cypress II

CYPRESS II FLOOR PLAN WITH OPTIONAL DELUXE KITCHEN

COYOTE CROSSING

12524 YELLOWSTONE STREET, GODLEY, TX 76044



Cypress II Opt. Deluxe Kitchen



This brochure is for general informational purposes and is to be used as a guide only. Changes may be made during the development process and floorplans, dimensions, fixtures, fittings, finishes and specifications are subject to change without notice. Window placement, balcony configuration, wardrobe sizes and living areas may vary slightly within each plan type. EQUAL HOUSING OPPORTUNITY

