



Primrose II

CLASSIC SERIES

COYOTE CROSSING

12524 YELLOWSTONE STREET, GODLEY, TX 76044

HOMES FROM

\$588,990

3,299
SQUARE FEET

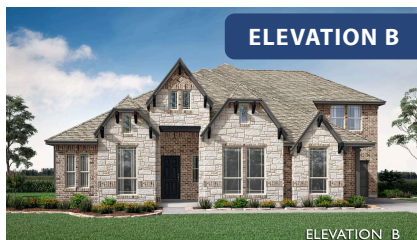
3
BEDROOMS

3.5
BATHROOMS

3
CAR GARAGE



ELEVATION A



ELEVATION B

ELEVATION B



ELEVATION C

ELEVATION C





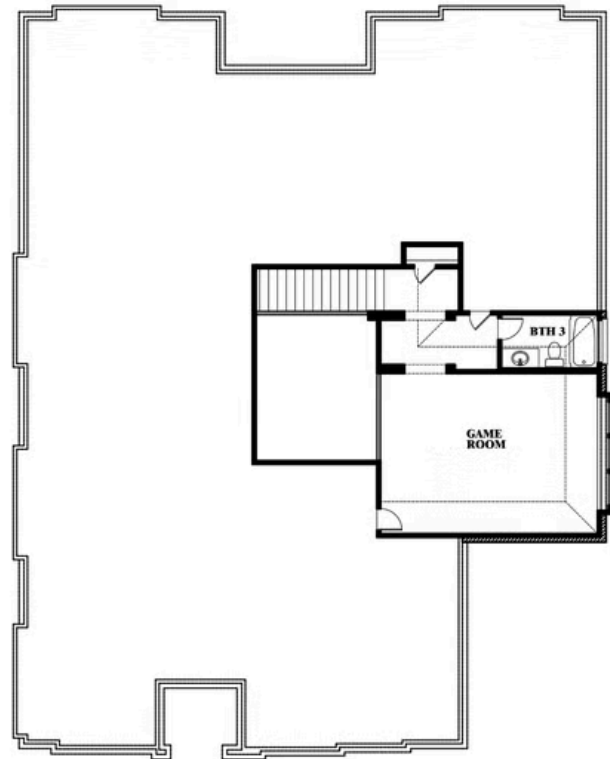
Primrose II

COYOTE CROSSING

12524 YELLOWSTONE STREET, GODLEY, TX 76044



Primrose II



This brochure is for general informational purposes and is to be used as a guide only. Changes may be made during the development process and floorplans, dimensions, fixtures, fittings, finishes and specifications are subject to change without notice. Window placement, balcony configuration, wardrobe sizes and living areas may vary slightly within each plan type. **EQUAL HOUSING OPPORTUNITY**