



# Star Ranch Elements

**1,531 – 3,056**  
SQUARE FEET

**3 – 6**  
BEDROOMS

**2 – 4**  
BATHROOMS

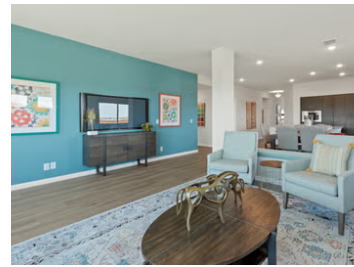
**2**  
CAR GARAGE

1012 Brenham Drive  
Godley, TX 76044

**MODELS**

1008 Brenham Drive, Godley, TX 76044 | **Redbud II**

1012 Brenham Drive, Godley, TX 76044 | **Violet IV**



Discover Star Ranch in Godley, Texas, a beautiful community located in the Godley ISD, featuring smaller class sizes as well as a brand-new high school!

Experience small-town charm with easy access to the Chisholm Trail Parkway, giving an easy commute to southern Fort Worth, Burleson, and downtown Fort Worth. Residents can enjoy outdoor activities in greenbelts and common areas or take advantage of nearby Burleson, Cleburne, and Lake Benbrook.

Get away from the hustle and bustle of the city and retreat to your home at Star Ranch!





# Star Ranch Elements

## Community Amenities

- Trails with Benches
- Exercise Stations
- Soccer Field
- Playground
- Pond
- Dog Station

## Local Area Amenities

- Parks and Recreation
- C.P. Hadley Park
- Godley Historic Downtown District
- Cleburne State Park
- Lost Oak Winery

## Utilities

- Electric: United Co-op 817.447.9292
- Gas: Atmos Energy 888.286.6700
- Water: Johnson County SUD 817.760.5200
- Internet Providers:
  - United Co-op 817.447.9292
  - Windstream 866.445.8084

## Police & Fire

Police 817.389.2500

Fire 817.389.3539

## HOA

\$395/year  
First Service Residential  
682-325-5363

## Tax

**Rate Per \$100**  
2.26

## Schools

<b>District</b>	Godley ISD
<b>Elementary</b>	Godley Elementary School
<b>Middle</b>	Godley Middle School
<b>High</b>	Godley High School

## Driving Directions

From 35W head West on FM1187/Crowley Plover Rd passing Chisholm Trail Pkwy. Then turn left onto 2331 South/Winscott Plover Rd. Turn right on Penbrook Dr then left on Stockton Drive then left on Brenham and the models will be on your left. Star Ranch is located across from Godley Elementary School.

