



1012 Brenham Drive

GODLEY, TX 76044

STAR RANCH

VIOLET IV FLOOR PLAN

Sales Model

2845
SQUARE FEET

4
BEDROOMS

3.5
BATHROOMS

2.5
CAR GARAGE

Model Home



The Classic Series Violet IV floor plan is a two-story home with four bedrooms and three and a half bathrooms. Features of this plan include a formal dining room, covered porch, large family room, study, open kitchen with custom cabinets and island, primary suite with an ensuite bathroom with walk-in closet and garden tub, an upstairs game room, and media room. Contact us or visit our model home for more information about building this plan.





1012 Brenham Drive

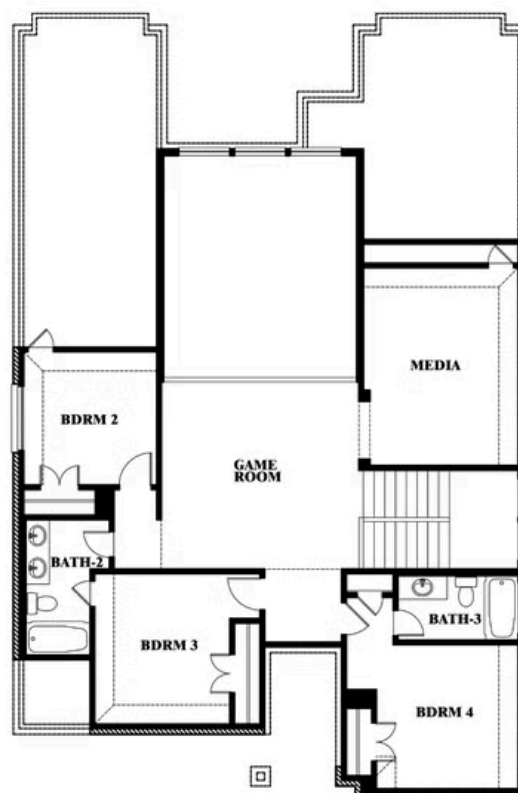
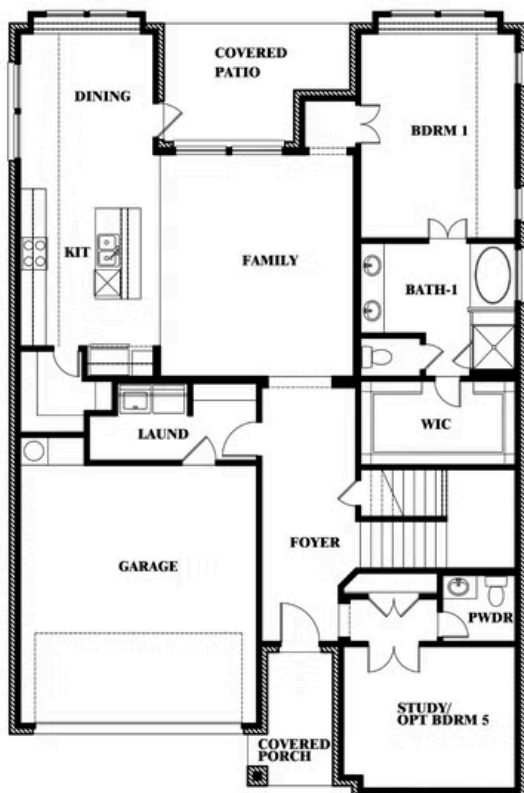
GODLEY, TX 76044

VIOLET IV FLOOR PLAN

VIOLET IV FLOOR PLAN



Violet IV



This brochure is for general informational purposes and is to be used as a guide only. Changes may be made during the development process and floorplans, dimensions, fixtures, fittings, finishes and specifications are subject to change without notice. Window placement, balcony configuration, wardrobe sizes and living areas may vary slightly within each plan type. **EQUAL HOUSING OPPORTUNITY**

