



# Primrose V

CLASSIC SERIES

**WILDCAT RIDGE PHASE 2 AND 4**

WILDCAT RIDGE, GODLEY, TX 76044

HOMES FROM

**\$605,990**

**3,700**  
SQUARE FEET

**4**  
BEDROOMS

**3.5**  
BATHROOMS

**3**  
CAR GARAGE

**ELEVATION A**



**ELEVATION B**



ELEVATION B

**ELEVATION C**



ELEVATION C





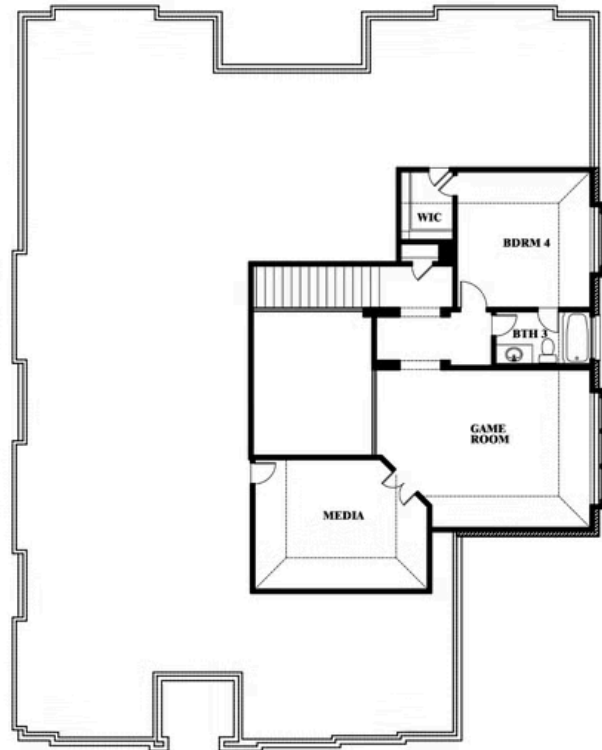
# Primrose V

## WILDCAT RIDGE PHASE 2 AND 4

WILDCAT RIDGE, GODLEY, TX 76044



## Primrose V



This brochure is for general informational purposes and is to be used as a guide only. Changes may be made during the development process and floorplans, dimensions, fixtures, fittings, finishes and specifications are subject to change without notice. Window placement, balcony configuration, wardrobe sizes and living areas may vary slightly within each plan type. EQUAL HOUSING OPPORTUNITY

