



Primrose FE III

CLASSIC SERIES

HOMES FROM
\$507,990

WAVERLY ESTATES

209 SADDLETREE DRIVE, JOSEPHINE, TX 75173

3,525
SQUARE FEET

3
BEDROOMS

3.5
BATHROOMS

3
CAR GARAGE



ELEVATION A



ELEVATION B

ELEVATION B



ELEVATION C

ELEVATION C





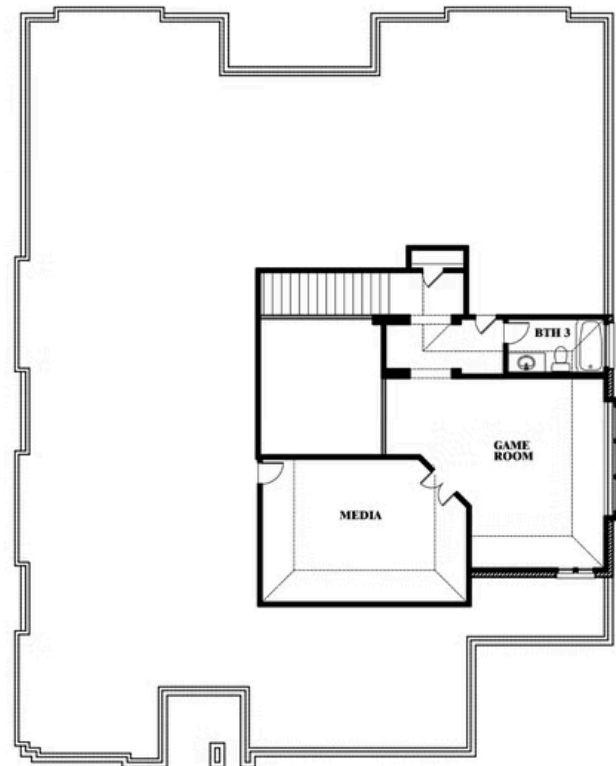
Primrose FE III

WAVERLY ESTATES

209 SADDLETREE DRIVE, JOSEPHINE, TX 75173



Primrose FE III



This brochure is for general informational purposes and is to be used as a guide only. Changes may be made during the development process and floorplans, dimensions, fixtures, fittings, finishes and specifications are subject to change without notice. Window placement, balcony configuration, wardrobe sizes and living areas may vary slightly within each plan type. EQUAL HOUSING OPPORTUNITY

