



# Primrose FE IV

CLASSIC SERIES

HOMES FROM  
**\$511,990**

## WAVERLY ESTATES

209 SADDLETREE DRIVE, JOSEPHINE, TX 75173

**3,543**  
SQUARE FEET

**4**  
BEDROOMS

**3.5**  
BATHROOMS

**3**  
CAR GARAGE





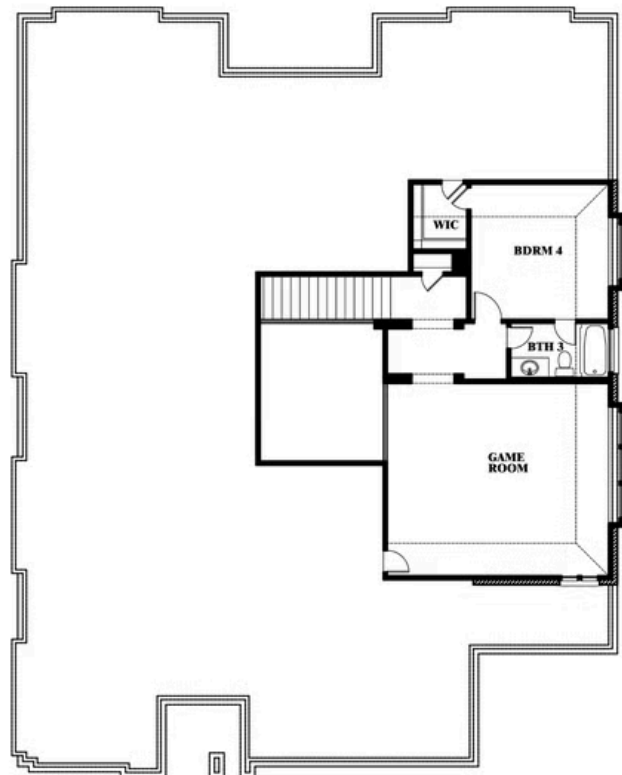
# Primrose FE IV

## WAVERLY ESTATES

209 SADDLETREE DRIVE, JOSEPHINE, TX 75173



## Primrose FE IV



This brochure is for general informational purposes and is to be used as a guide only. Changes may be made during the development process and floorplans, dimensions, fixtures, fittings, finishes and specifications are subject to change without notice. Window placement, balcony configuration, wardrobe sizes and living areas may vary slightly within each plan type. EQUAL HOUSING OPPORTUNITY

