



Violet III

CLASSIC SERIES

HOMES FROM
\$445,990

WAVERLY ESTATES

209 SADDLETREE DRIVE, JOSEPHINE, TX 75173

2,628
SQUARE FEET

4
BEDROOMS

3.5
BATHROOMS

3
CAR GARAGE



ELEVATION A



ELEVATION AS



ELEVATION B



ELEVATION C



ELEVATION D





Violet III

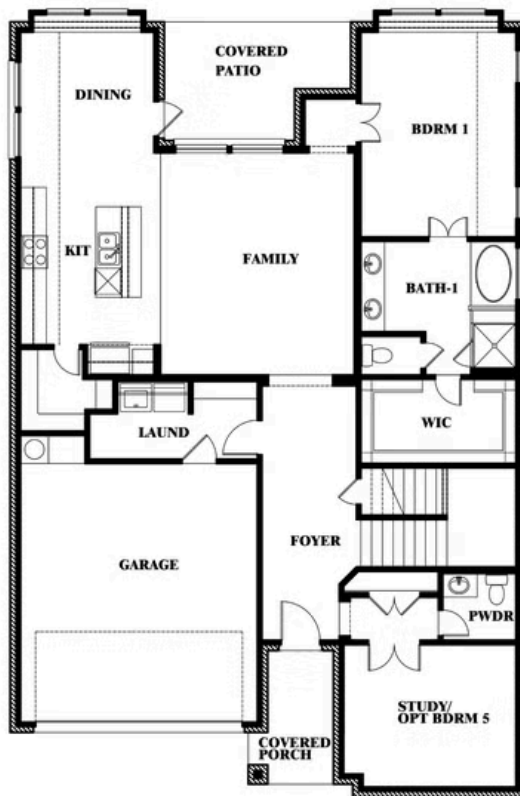
VIOLET III FLOOR PLAN

WAVERLY ESTATES

209 SADDLETREE DRIVE, JOSEPHINE, TX 75173



Violet III



This brochure is for general informational purposes and is to be used as a guide only. Changes may be made during the development process and floorplans, dimensions, fixtures, fittings, finishes and specifications are subject to change without notice. Window placement, balcony configuration, wardrobe sizes and living areas may vary slightly within each plan type. EQUAL HOUSING OPPORTUNITY



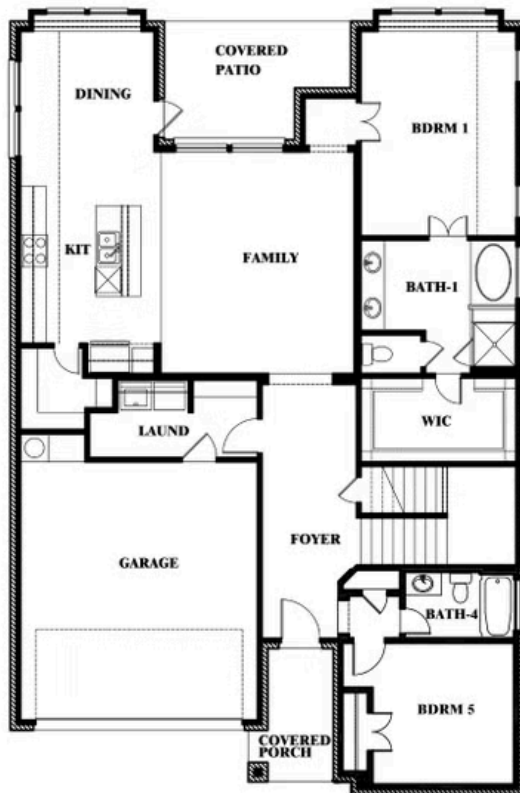


Violet III

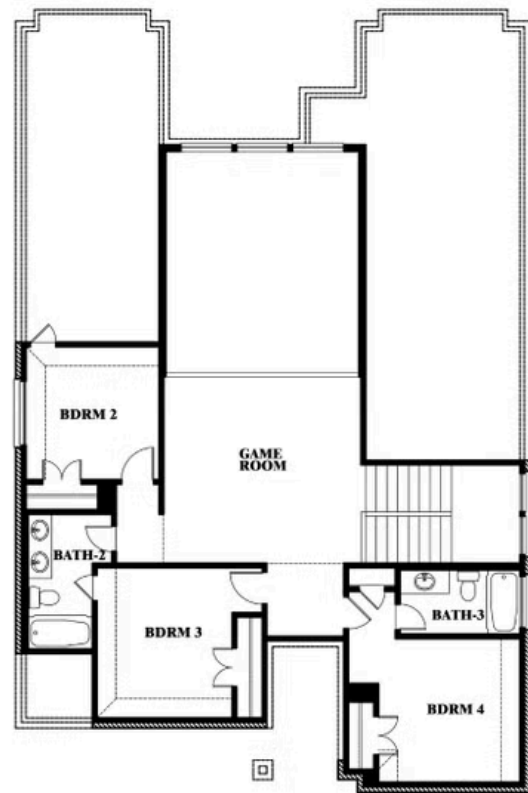
WAVERLY ESTATES

209 SADDLETREE DRIVE, JOSEPHINE, TX 75173

VIOLET III FLOOR PLAN WITH BEDROOM AT STUDY



Violet III Opt. Bed 5 & Bath 4 at Study



This brochure is for general informational purposes and is to be used as a guide only. Changes may be made during the development process and floorplans, dimensions, fixtures, fittings, finishes and specifications are subject to change without notice. Window placement, balcony configuration, wardrobe sizes and living areas may vary slightly within each plan type. EQUAL HOUSING OPPORTUNITY

