



Bellflower

CLASSIC SERIES

SILO MILLS CLASSIC 70

4425 SWEET ACRES AVE, JOSHUA, TX 76058

HOMES FROM
\$514,990

3,527
SQUARE FEET

4
BEDROOMS

3.5
BATHROOMS

2
CAR GARAGE



ELEVATION D



ELEVATION A

ELEVATION A



ELEVATION AS

ELEVATION AS



ELEVATION B

ELEVATION B



ELEVATION C

ELEVATION C





Bellflower

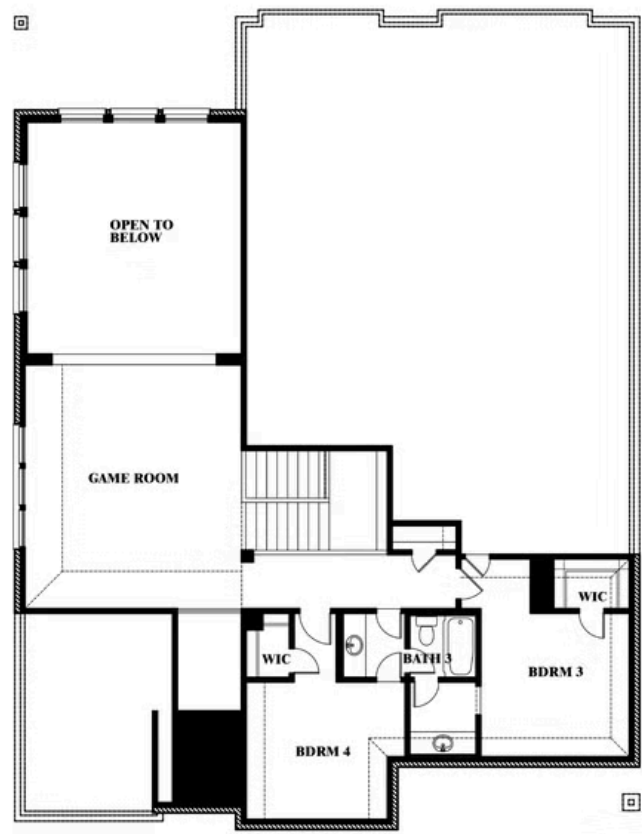
BELLFLOWER FLOOR PLAN

SILO MILLS CLASSIC 70

4425 SWEET ACRES AVE, JOSHUA, TX 76058



Bellflower



This brochure is for general informational purposes and is to be used as a guide only. Changes may be made during the development process and floorplans, dimensions, fixtures, fittings, finishes and specifications are subject to change without notice. Window placement, balcony configuration, wardrobe sizes and living areas may vary slightly within each plan type. EQUAL HOUSING OPPORTUNITY

