



# 4421 Sweet Acres Avenue

JOSHUA, TX 76058

## SILO MILLS

JASMINE FLOOR PLAN

**2098**  
SQUARE FEET

**3**  
BEDROOMS

**2.0**  
BATHROOMS

**2**  
CAR GARAGE

Model Home



This model of our Classic Series Jasmine floor plan is a single-story home with four bedrooms and three bathrooms. Features of this plan include a covered porch, large family room, open kitchen with custom cabinets and island, and a primary suite with an ensuite bathroom, walk-in closet, and garden tub. Contact us or visit our model home for more information about building this plan.





**4421 Sweet Acres Avenue**

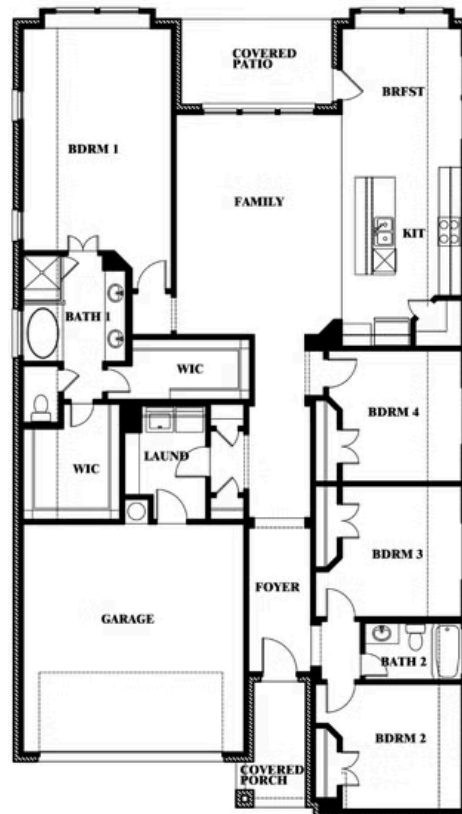
JOSHUA, TX 76058

JASMINE FLOOR PLAN

**JASMINE FLOOR PLAN**



Jasmine



This brochure is for general informational purposes and is to be used as a guide only. Changes may be made during the development process and floorplans, dimensions, fixtures, fittings, finishes and specifications are subject to change without notice. Window placement, balcony configuration, wardrobe sizes and living areas may vary slightly within each plan type. EQUAL HOUSING OPPORTUNITY

