



Primrose FE IV

CLASSIC SERIES

SILO MILLS

4425 SWEET ACRES AVE, JOSHUA, TX 76058

HOMES FROM
\$541,990

3,543
SQUARE FEET

4
BEDROOMS

3.5
BATHROOMS

3
CAR GARAGE



ELEVATION A



ELEVATION B



ELEVATION C





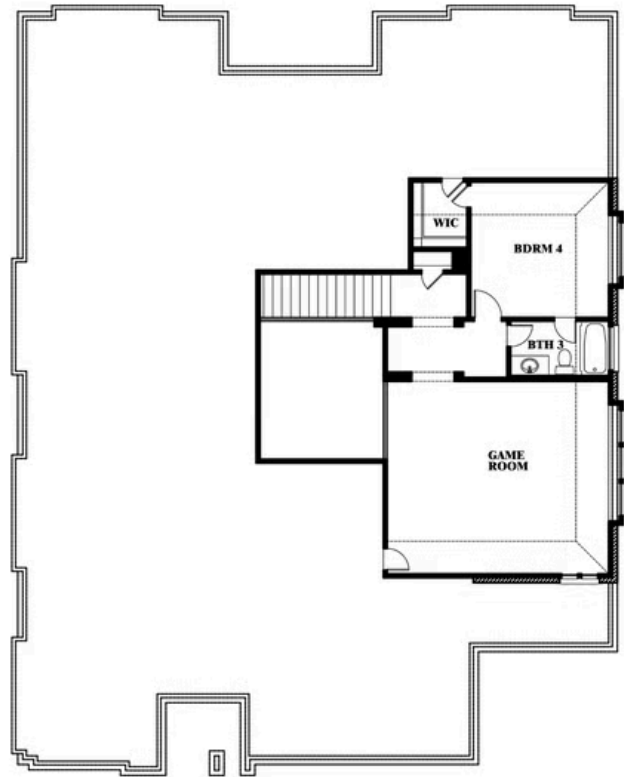
Primrose FE IV

SILO MILLS

4425 SWEET ACRES AVE, JOSHUA, TX 76058



Primrose FE IV



This brochure is for general informational purposes and is to be used as a guide only. Changes may be made during the development process and floorplans, dimensions, fixtures, fittings, finishes and specifications are subject to change without notice. Window placement, balcony configuration, wardrobe sizes and living areas may vary slightly within each plan type. EQUAL HOUSING OPPORTUNITY