

Violet II

CLASSIC SERIES

TIMBERBROOK 3B-4A

206 OAKCREST DRIVE, JUSTIN, TX 76247

HOMES FROM

\$494,990

2,591
SQUARE FEET

3
BEDROOMS

2.5
BATHROOMS

2
CAR GARAGE



ELEVATION A



ELEVATION AS

ELEVATION AS



ELEVATION B

ELEVATION B



ELEVATION C

ELEVATION C



ELEVATION D

ELEVATION D

Violet II

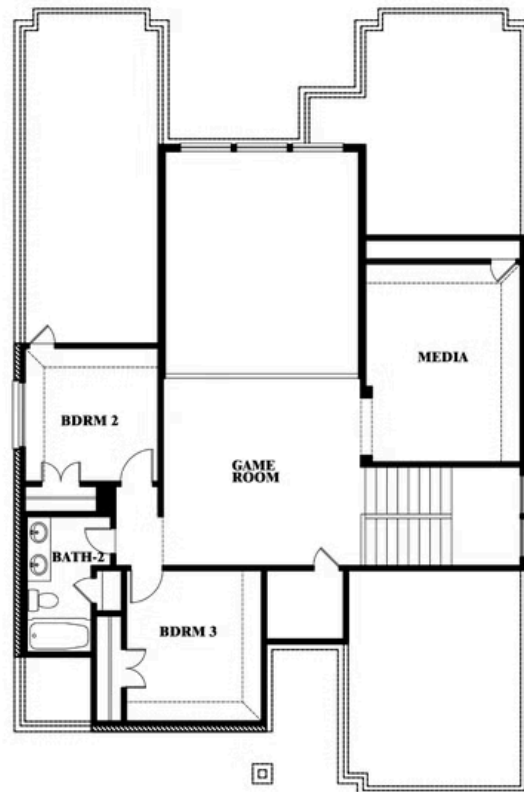
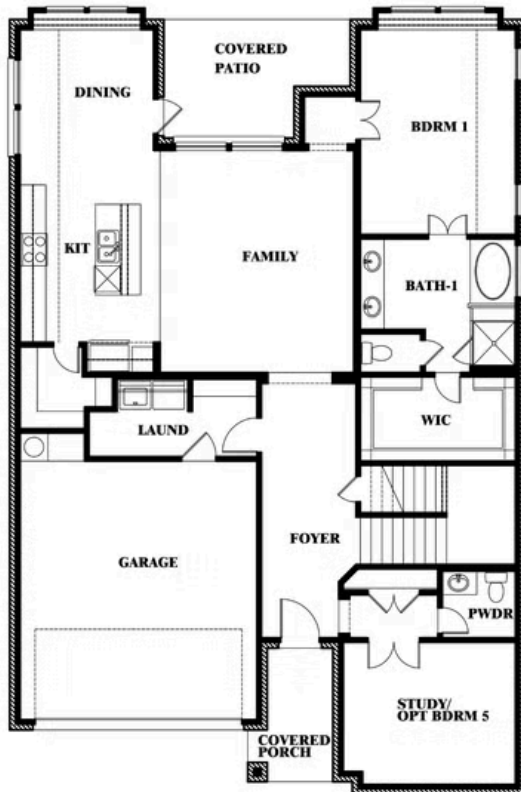
VIOLET II FLOOR PLAN

TIMBERBROOK 3B-4A

206 OAKCREST DRIVE, JUSTIN, TX 76247



Violet II



This brochure is for general informational purposes and is to be used as a guide only. Changes may be made during the development process and floorplans, dimensions, fixtures, fittings, finishes and specifications are subject to change without notice. Window placement, balcony configuration, wardrobe sizes and living areas may vary slightly within each plan type. EQUAL HOUSING OPPORTUNITY

Violet II

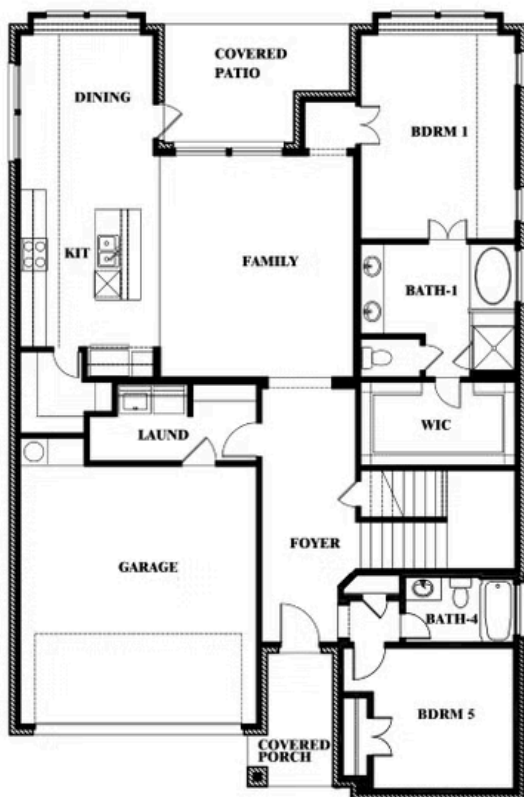
TIMBERBROOK 3B-4A

206 OAKCREST DRIVE, JUSTIN, TX 76247

VIOLET II FLOOR PLAN WITH OPTIONAL BEDROOM AT STUDY



Violet II
Opt. Bed 5 & Bath 4 at Study



This brochure is for general informational purposes and is to be used as a guide only. Changes may be made during the development process and floorplans, dimensions, fixtures, fittings, finishes and specifications are subject to change without notice. Window placement, balcony configuration, wardrobe sizes and living areas may vary slightly within each plan type. EQUAL HOUSING OPPORTUNITY