

Violet III

CLASSIC SERIES

HOMES FROM
\$508,990

TIMBERBROOK 3B-4A

1006 LONGBOW TRAIL, JUSTIN, TX 76247

2,628
SQUARE FEET

4
BEDROOMS

3.5
BATHROOMS

2
CAR GARAGE



ELEVATION A



ELEVATION AS



ELEVATION B



ELEVATION C



ELEVATION D

Violet III

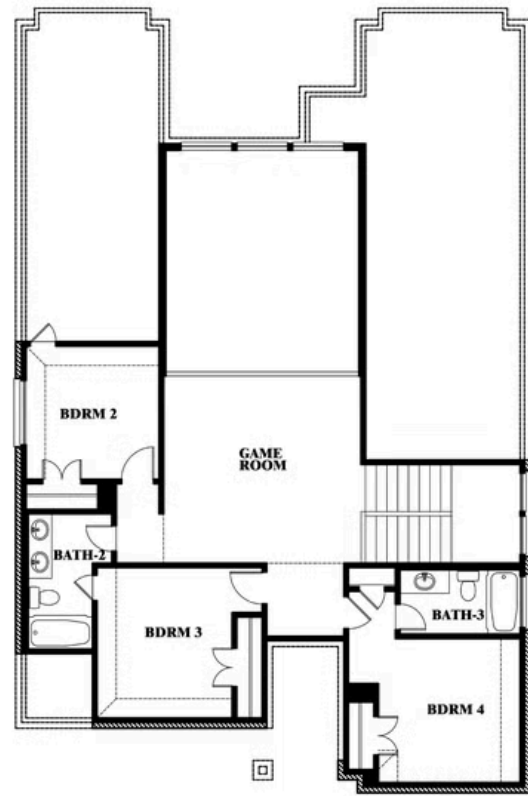
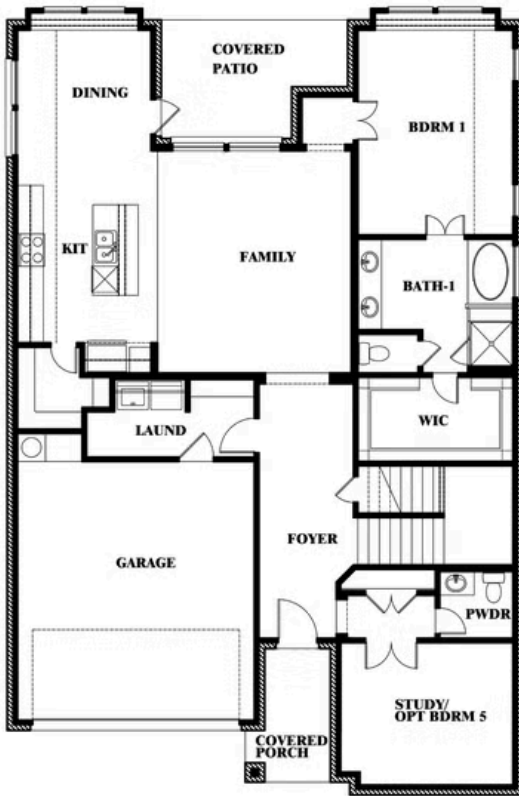
VIOLET III FLOOR PLAN

TIMBERBROOK 3B-4A

1006 LONGBOW TRAIL, JUSTIN, TX 76247



Violet III



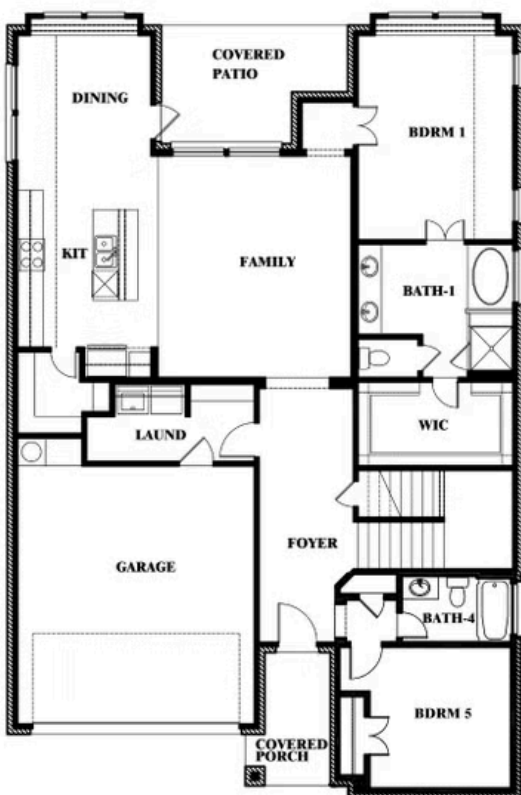
This brochure is for general informational purposes and is to be used as a guide only. Changes may be made during the development process and floorplans, dimensions, fixtures, fittings, finishes and specifications are subject to change without notice. Window placement, balcony configuration, wardrobe sizes and living areas may vary slightly within each plan type. EQUAL HOUSING OPPORTUNITY

Violet III

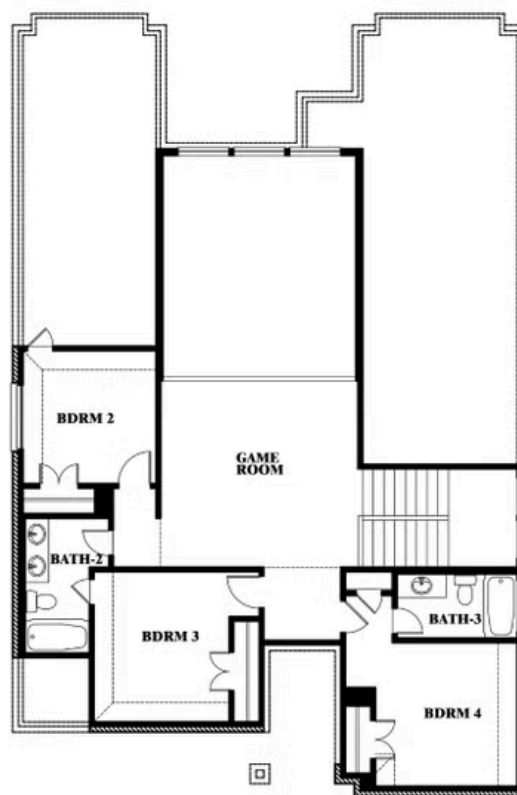
TIMBERBROOK 3B-4A

1006 LONGBOW TRAIL, JUSTIN, TX 76247

VIOLET III FLOOR PLAN WITH BEDROOM AT STUDY



Violet III Opt. Bed 5 & Bath 4 at Study



This brochure is for general informational purposes and is to be used as a guide only. Changes may be made during the development process and floorplans, dimensions, fixtures, fittings, finishes and specifications are subject to change without notice. Window placement, balcony configuration, wardrobe sizes and living areas may vary slightly within each plan type. EQUAL HOUSING OPPORTUNITY