

Primrose FE VI

HOMES FROM
\$628,990

CLASSIC SERIES

TIMBERBROOK 4A, 5, 4B-70S

1006 LONGBOW TRAIL, JUSTIN, TX 76247

4,065
SQUARE FEET

5
BEDROOMS

4.5
BATHROOMS

3
CAR GARAGE



ELEVATION A



ELEVATION B

ELEVATION B



ELEVATION C

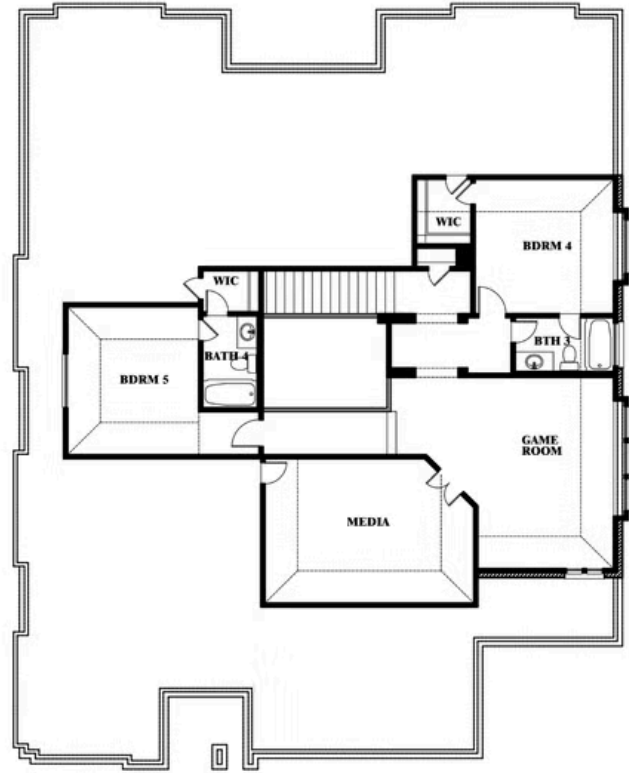
ELEVATION C

Primrose FE VI

TIMBERBROOK 4A, 5, 4B-70S
1006 LONGBOW TRAIL, JUSTIN, TX 76247



Primrose FE VI



This brochure is for general informational purposes and is to be used as a guide only. Changes may be made during the development process and floorplans, dimensions, fixtures, fittings, finishes and specifications are subject to change without notice. Window placement, balcony configuration, wardrobe sizes and living areas may vary slightly within each plan type. EQUAL HOUSING OPPORTUNITY