

# Cypress II

CLASSIC SERIES

HOMES FROM  
**\$506,990**

**TIMBERBROOK 4B**

206 OAKCREST DRIVE, JUSTIN, TX 76247

**2,454**  
SQUARE FEET

**4**  
BEDROOMS

**3.0**  
BATHROOMS

**2**  
CAR GARAGE



**ELEVATION F**



**ELEVATION B**

**ELEVATION B**



**ELEVATION C**

**ELEVATION C**



**ELEVATION D**

**ELEVATION D**



**ELEVATION E**

**ELEVATION E**

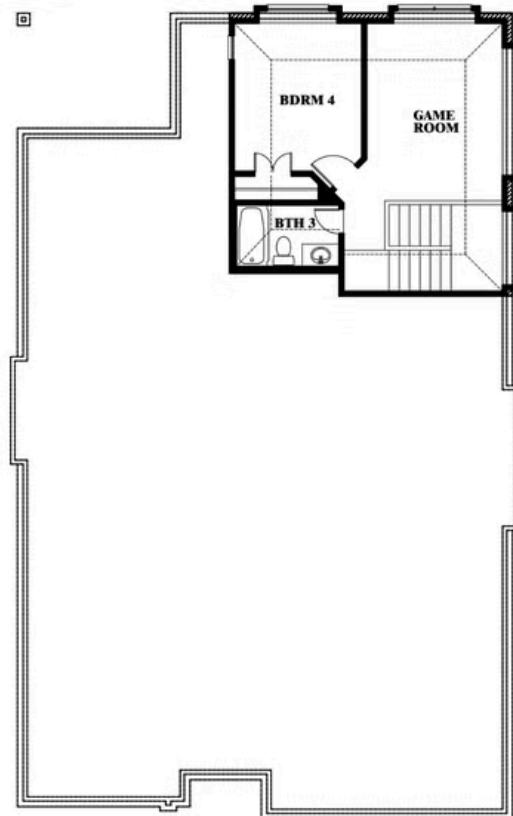
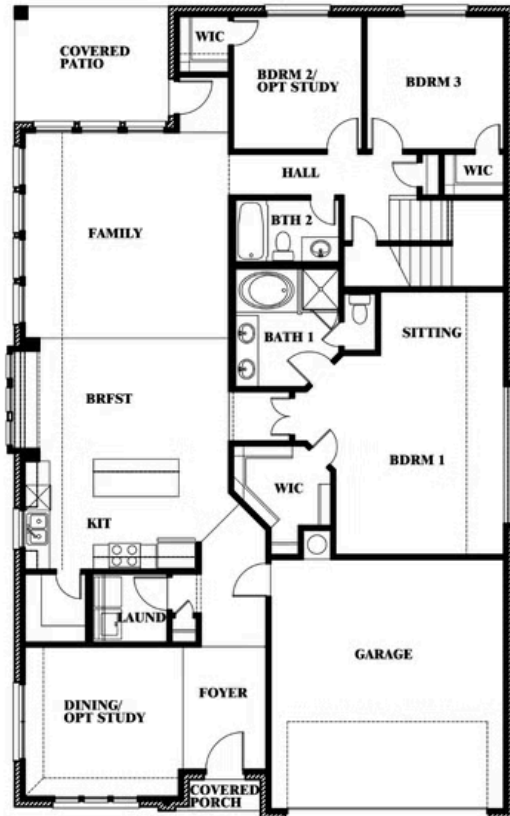
# Cypress II

## TIMBERBROOK 4B

206 OAKCREST DRIVE, JUSTIN, TX 76247



## Cypress II



This brochure is for general informational purposes and is to be used as a guide only. Changes may be made during the development process and floorplans, dimensions, fixtures, fittings, finishes and specifications are subject to change without notice. Window placement, balcony configuration, wardrobe sizes and living areas may vary slightly within each plan type. EQUAL HOUSING OPPORTUNITY