



Cypress II

CLASSIC SERIES

HOMES FROM
\$375,990

GEORGETOWN AT KINGS FORT 50S

4102 BERRY LANE, KAUFMAN, TX 75142

2,454
SQUARE FEET

4
BEDROOMS

3.0
BATHROOMS

2
CAR GARAGE





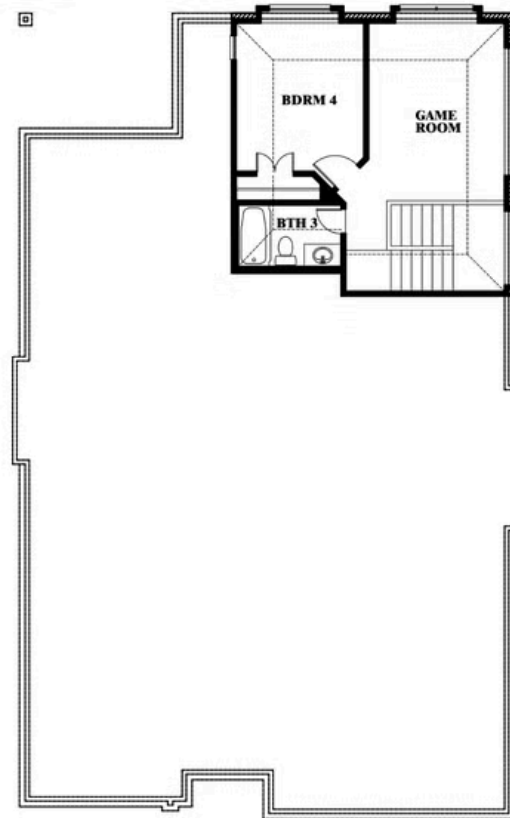
Cypress II

CYPRESS II FLOOR PLAN

GEORGETOWN AT KINGS FORT 50S
4102 BERRY LANE, KAUFMAN, TX 75142



Cypress II



This brochure is for general informational purposes and is to be used as a guide only. Changes may be made during the development process and floorplans, dimensions, fixtures, fittings, finishes and specifications are subject to change without notice. Window placement, balcony configuration, wardrobe sizes and living areas may vary slightly within each plan type. EQUAL HOUSING OPPORTUNITY





Cypress II

GEORGETOWN AT KINGS FORT 50S

4102 BERRY LANE, KAUFMAN, TX 75142

CYPRESS II FLOOR PLAN WITH OPTIONAL DELUXE KITCHEN



Cypress II Opt. Deluxe Kitchen



This brochure is for general informational purposes and is to be used as a guide only. Changes may be made during the development process and floorplans, dimensions, fixtures, fittings, finishes and specifications are subject to change without notice. Window placement, balcony configuration, wardrobe sizes and living areas may vary slightly within each plan type. EQUAL HOUSING OPPORTUNITY

