



# Gardenia

**ELEMENTS SERIES**

## GEORGETOWN AT KINGS FORT 50S

4102 BERRY LANE, KAUFMAN, TX 75142

HOMES FROM  
**\$361,990**

**2,638**  
SQUARE FEET

**4**  
BEDROOMS

**2.5**  
BATHROOMS

**2**  
CAR GARAGE



**ELEVATION BS**



**ELEVATION A**

ELEVATION A



**ELEVATION B**

ELEVATION B



**ELEVATION C**

ELEVATION C





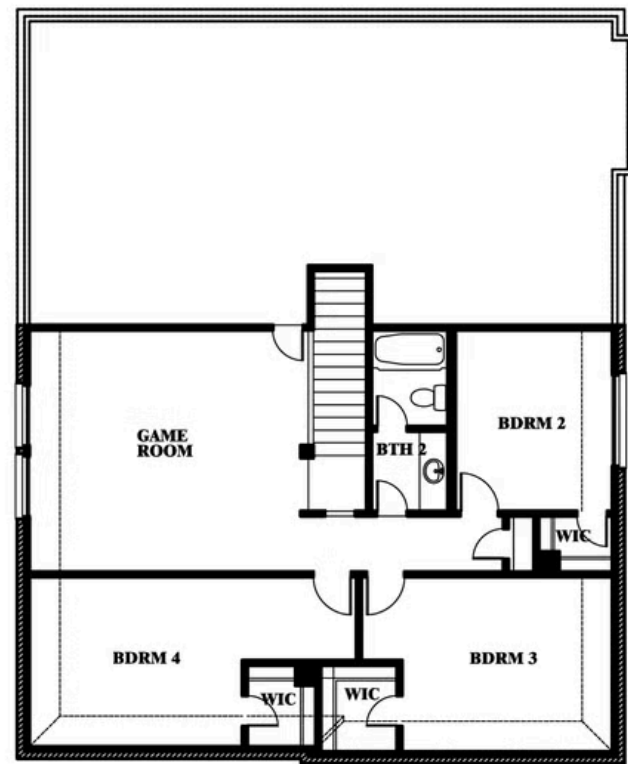
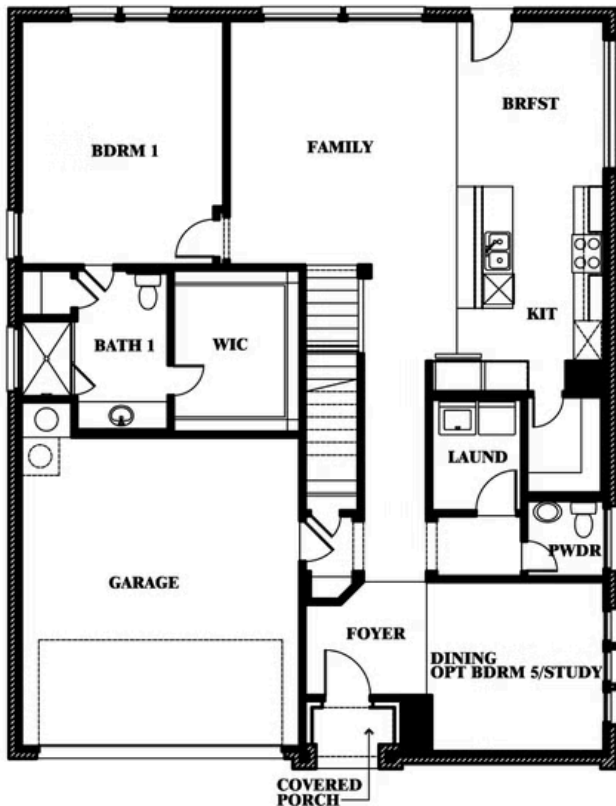
# Gardenia

## GEORGETOWN AT KINGS FORT 50S

4102 BERRY LANE, KAUFMAN, TX 75142



## Gardenia



This brochure is for general informational purposes and is to be used as a guide only. Changes may be made during the development process and floorplans, dimensions, fixtures, fittings, finishes and specifications are subject to change without notice. Window placement, balcony configuration, wardrobe sizes and living areas may vary slightly within each plan type. **EQUAL HOUSING OPPORTUNITY**





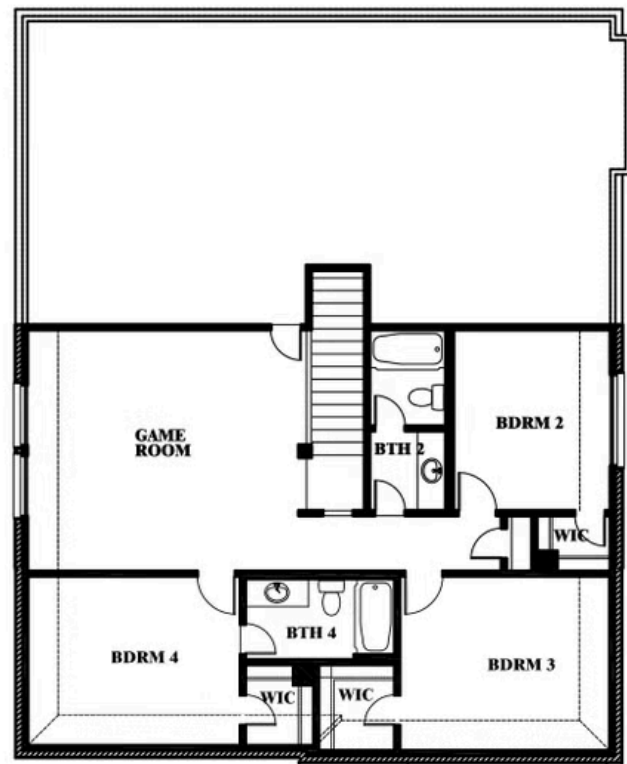
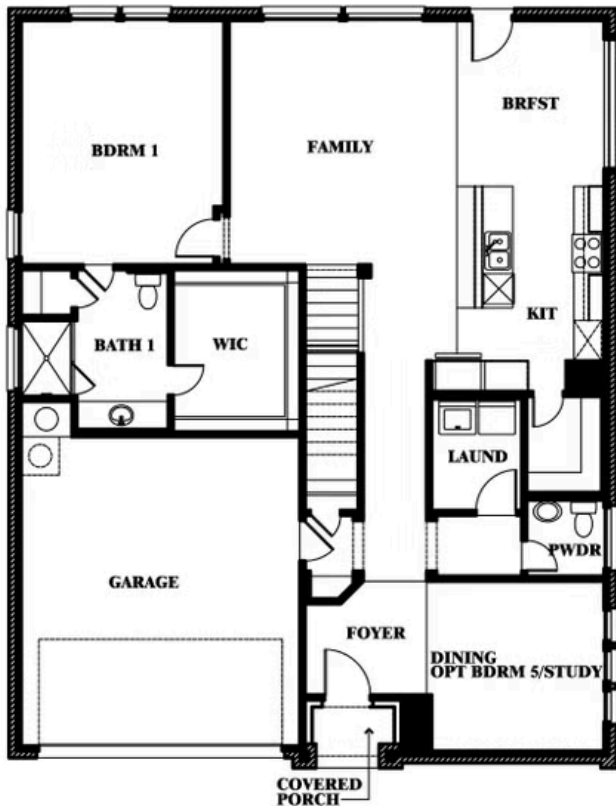
# Gardenia

## GEORGETOWN AT KINGS FORT 50S

4102 BERRY LANE, KAUFMAN, TX 75142



## Gardenia Opt. Bath 4 at Bed 4



This brochure is for general informational purposes and is to be used as a guide only. Changes may be made during the development process and floorplans, dimensions, fixtures, fittings, finishes and specifications are subject to change without notice. Window placement, balcony configuration, wardrobe sizes and living areas may vary slightly within each plan type. **EQUAL HOUSING OPPORTUNITY**





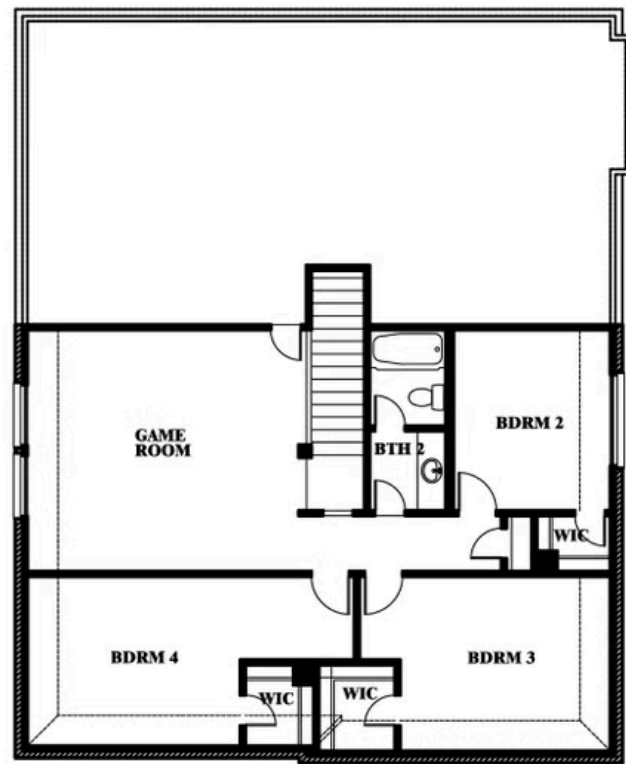
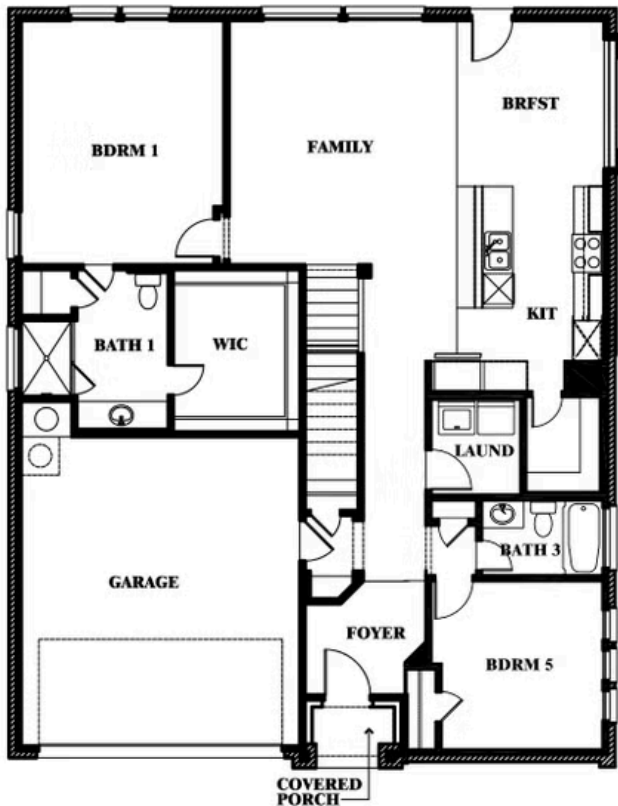
# Gardenia

## GEORGETOWN AT KINGS FORT 50S

4102 BERRY LANE, KAUFMAN, TX 75142



### Gardenia Opt. Bed 5 & Bath 3 at Dining



This brochure is for general informational purposes and is to be used as a guide only. Changes may be made during the development process and floorplans, dimensions, fixtures, fittings, finishes and specifications are subject to change without notice. Window placement, balcony configuration, wardrobe sizes and living areas may vary slightly within each plan type. **EQUAL HOUSING OPPORTUNITY**

