

Primrose FE II

CLASSIC SERIES

GEORGETOWN AT KINGS FORT 60S

4102 BERRY LANE, KAUFMAN, TX 75142

HOMES FROM

\$481,990

3,336
SQUARE FEET

3
BEDROOMS

3.5
BATHROOMS

3
CAR GARAGE

ELEVATION A



ELEVATION B



ELEVATION B

ELEVATION C



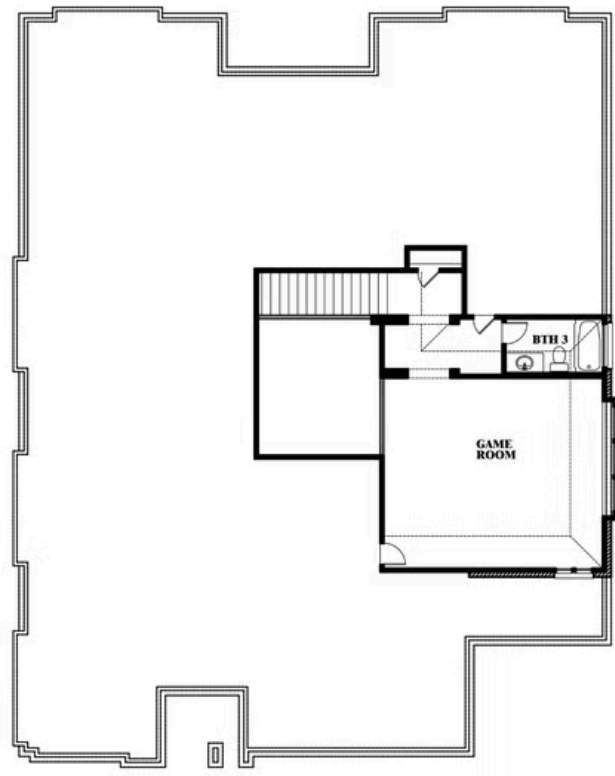
ELEVATION C

Primrose FE II

GEORGETOWN AT KINGS FORT 60S
4102 BERRY LANE, KAUFMAN, TX 75142



Primrose FE II



This brochure is for general informational purposes and is to be used as a guide only. Changes may be made during the development process and floorplans, dimensions, fixtures, fittings, finishes and specifications are subject to change without notice. Window placement, balcony configuration, wardrobe sizes and living areas may vary slightly within each plan type. EQUAL HOUSING OPPORTUNITY