

# Violet IV

CLASSIC SERIES

HOMES FROM  
**\$426,990**

**GEORGETOWN AT KINGS FORT 60S**  
4102 BERRY LANE, KAUFMAN, TX 75142

**2,838**  
SQUARE FEET

**4**  
BEDROOMS

**3.5**  
BATHROOMS

**2**  
CAR GARAGE



# Violet IV

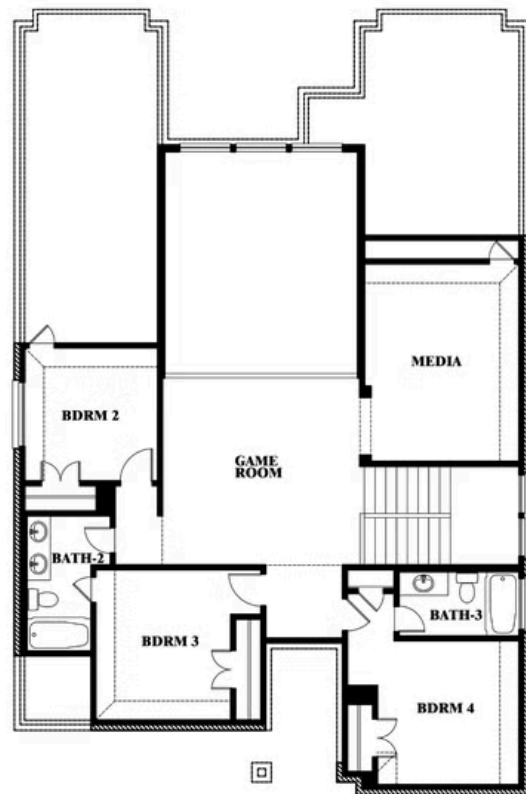
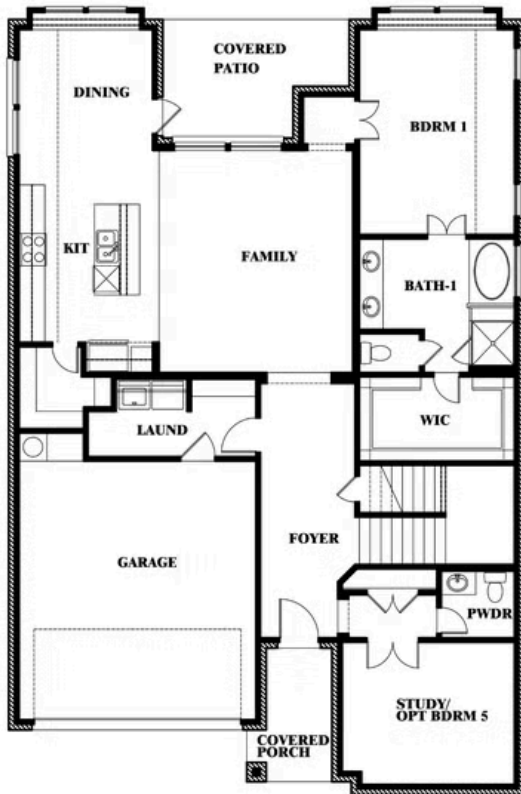
## VIOLET IV FLOOR PLAN

## GEORGETOWN AT KINGS FORT 60S

4102 BERRY LANE, KAUFMAN, TX 75142



## Violet IV



This brochure is for general informational purposes and is to be used as a guide only. Changes may be made during the development process and floorplans, dimensions, fixtures, fittings, finishes and specifications are subject to change without notice. Window placement, balcony configuration, wardrobe sizes and living areas may vary slightly within each plan type. EQUAL HOUSING OPPORTUNITY

# Violet IV

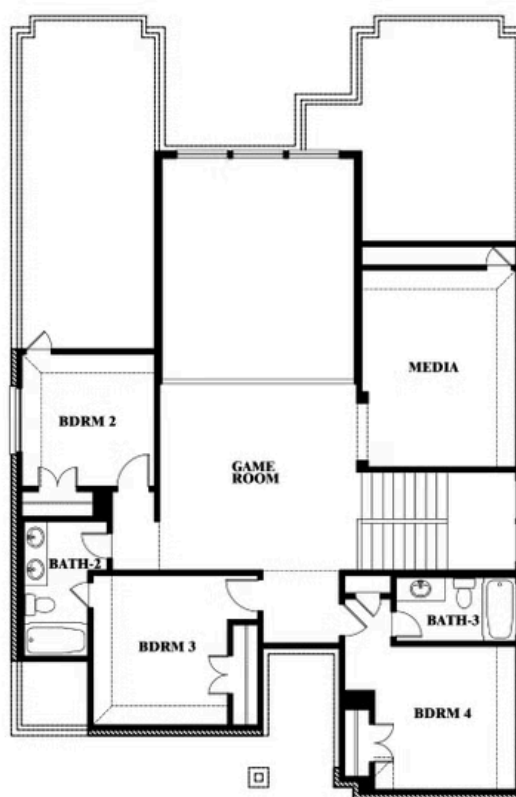
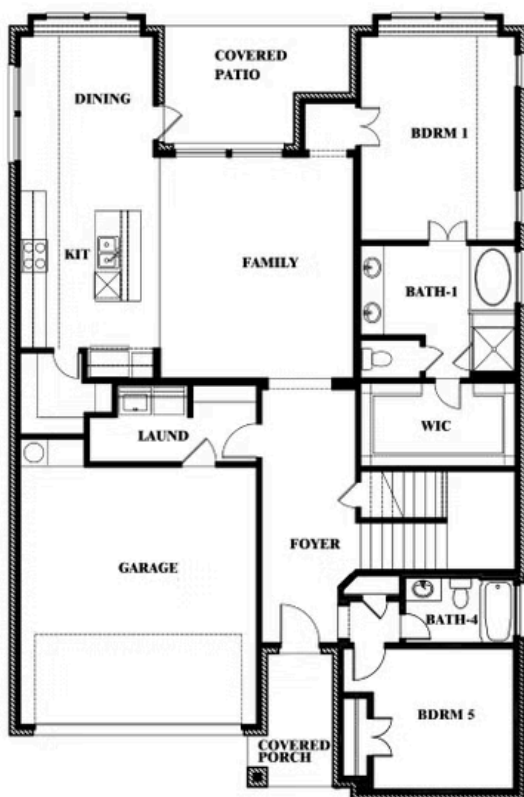
**VIOLET IV FLOOR PLAN WITH OPTIONAL BEDROOM AT STUDY**

**GEORGETOWN AT KINGS FORT 60S**

4102 BERRY LANE, KAUFMAN, TX 75142



**Violet IV**  
Opt. Bed 5 & Bath 4 at Study



This brochure is for general informational purposes and is to be used as a guide only. Changes may be made during the development process and floorplans, dimensions, fixtures, fittings, finishes and specifications are subject to change without notice. Window placement, balcony configuration, wardrobe sizes and living areas may vary slightly within each plan type. **EQUAL HOUSING OPPORTUNITY**